

PINWOODFER

Copyright © 2019-2022 SubDude Audio LLC, Idaho, USA. All Rights Reserved. Reproduction, transmission or redistribution of this document or its contents without written permission is prohibited.

Take your time, follow the instructions, relax, and enjoy yourself!

WARNINGS: Perform installation with your pinball machine turned off and unplugged from AC power.

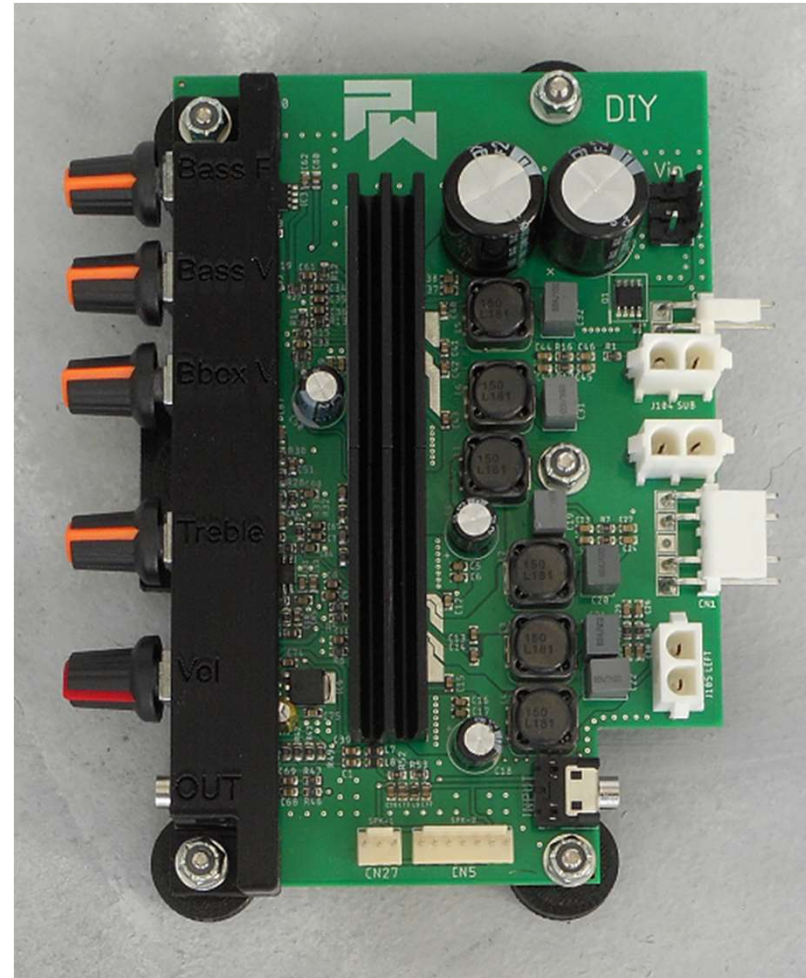


Spike-2

DIY Amplifier Installation Instructions

Spike-2 PinWoofers™ DIY Amplifier

Shown is the PinWoofers Spike-2 DIY Amplifier
Complete with Mounting Bracket.

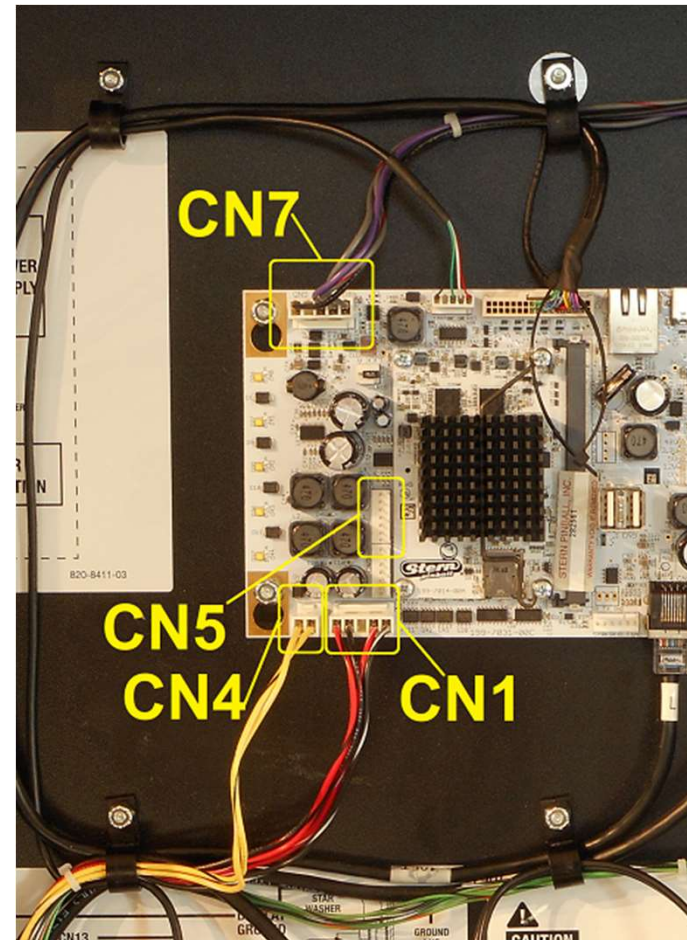


PINWOOFER

Spike-2 CPU Node Board – Header Overview

Familiarize yourself with the headers required for the DIY Amplifier connection:

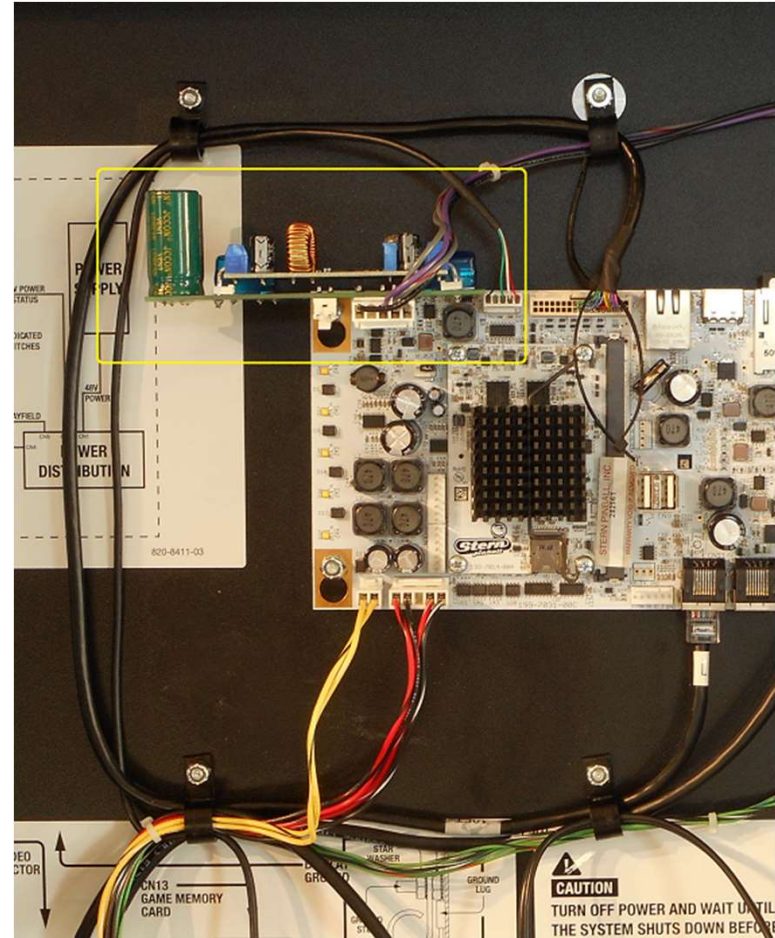
- CN1 – Backbox Speaker Header
- CN4 – Cabinet Speaker Header
- CN5 – Line IO Header
- CN7 – Power Header



PINWOOFER

Spike-2 – PinWoofers™ Power Board Installation

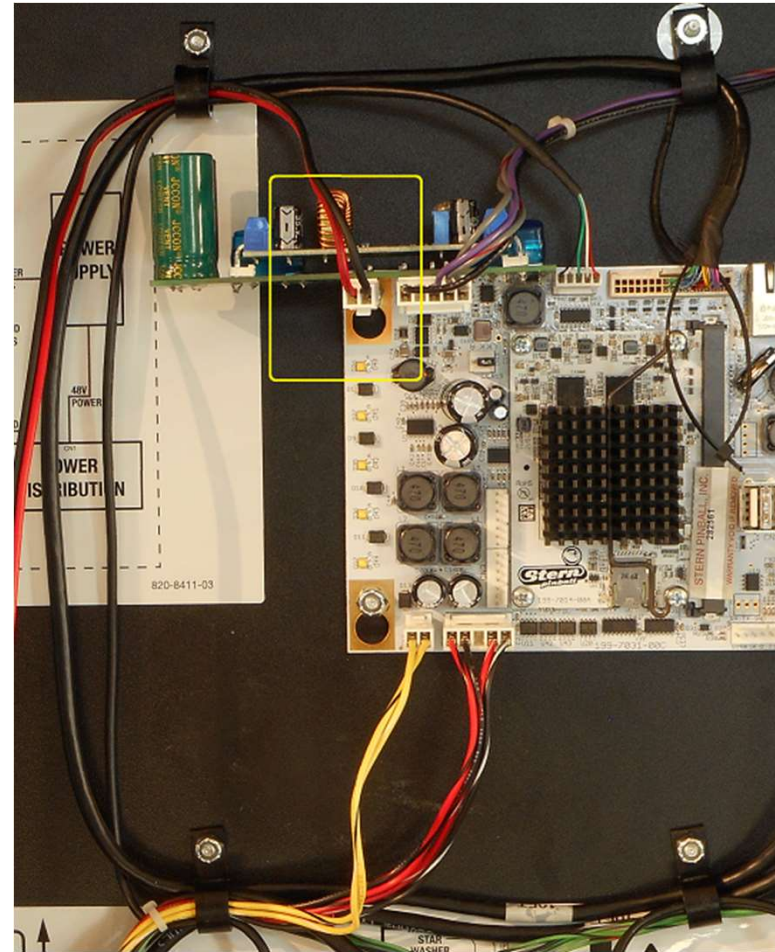
1. Disconnect the factory wire connector from CN7.
2. Plug the PinWoofers Power Board into CN7.
3. Plug the factory wire connector into the PinWoofers Power Board.



PINWOOFER

Spike-2 – PinWoofers™ Power Cable

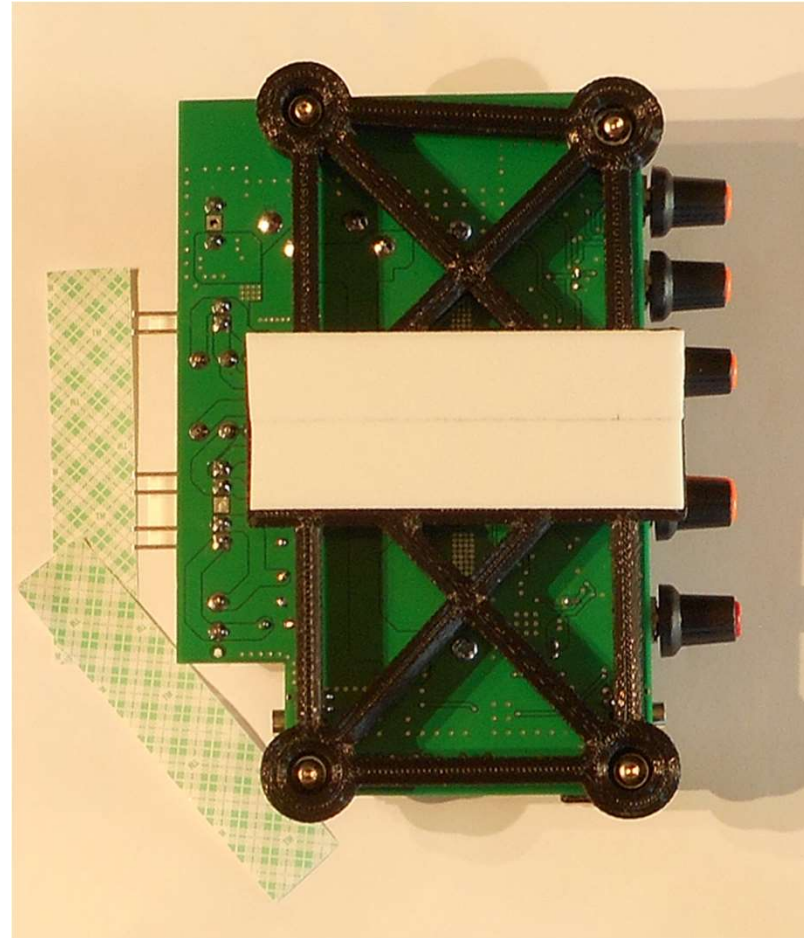
1. Connect the 2-Pin Power Cable as shown.



PINWOOFER

Spike-2 – Double Sticky Tape

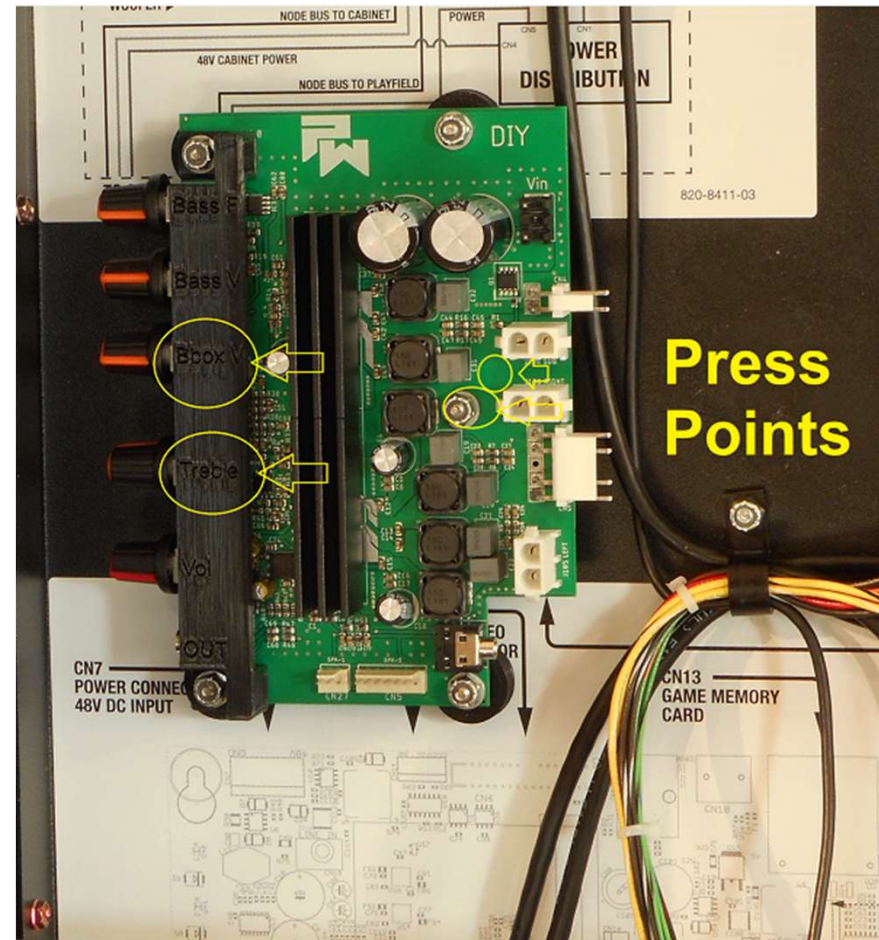
1. Locate and remove the double sticky tape cover(s) from the underside of the DIY Amplifier Bracket.
2. Double Sticky Tape is subject to change; never attempt to clean the surface of the bracket mounting pad.
3. It is strongly recommended that you clean the backplane surface of the machine with alcohol prior to adhering the tape.
4. Read the next section prior to sticking the amplifier to the backplane.



PINWOOFER

Spike-2 – Mount Amplifier

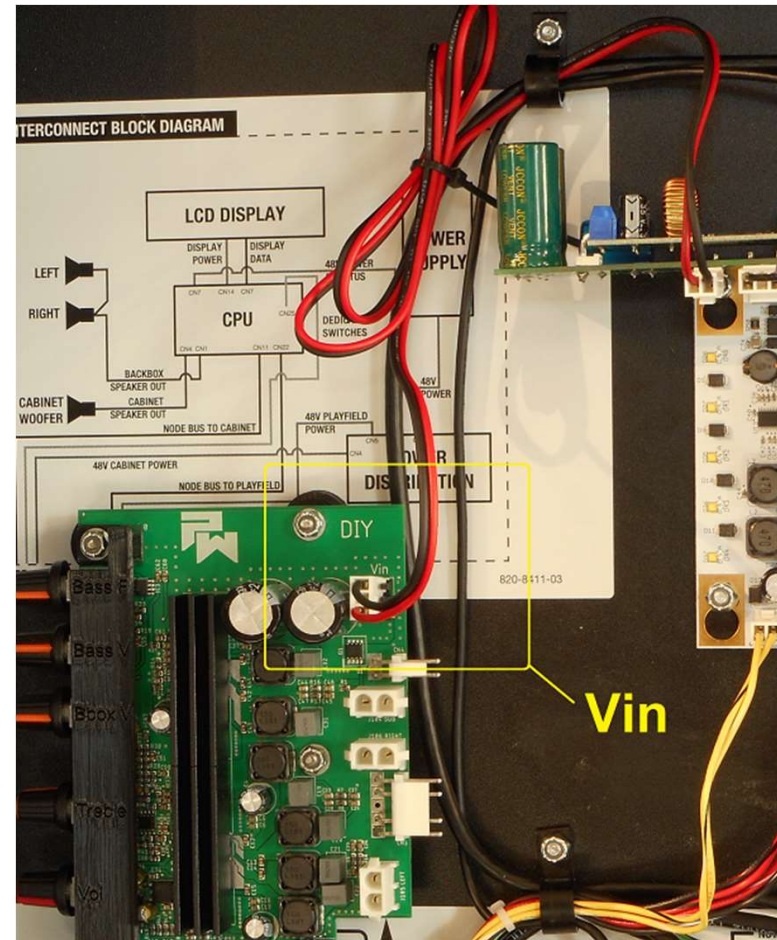
1. Locate the amplifier in the as shown:
 1. Be certain that the 7-wire audio cable will comfortably reach between the CN5 header on the Amplifier and the CN5 header on the Spike-2 CPU Node Board prior to committing to your mount location.
 2. Scroll ahead in the instructions to view this cable connection.
 3. Use extreme caution when affixing the Amplifier:
 - Press points are shown – don't overdo it.
 - Apply pressure only to the locations shown in the yellow circles.
 - Hold your press points for a few moments to allow for the tape to setup.
 - A reasonable amount of pressure is all that's needed – let the tape do the work.
 - Monitor your tape for a few days to ensure it continues to bond.



PINWOOFER

Spike-2 – Connect Amplifier Power

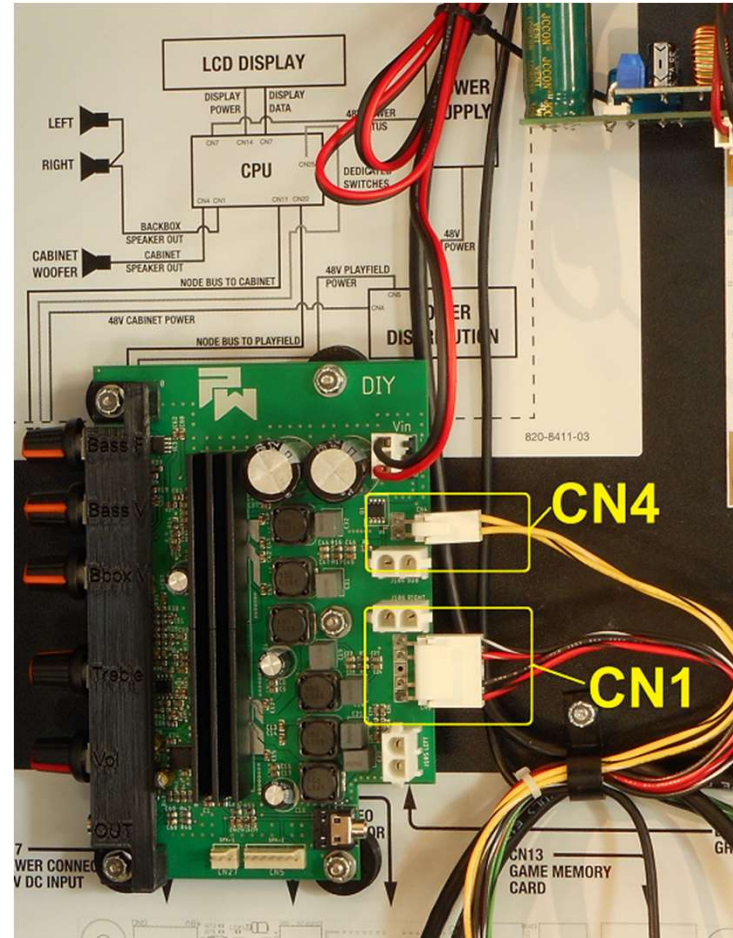
1. Locate the Vin Header on the amplifier.
2. Connect the 3-pin power wire connector as shown.
3. Be certain that the red wire routes to “+” and the black wire routes to “-” as shown.
4. These polarities are also printed on the PCB for reference.



PINWOOFER

Spike-2 – Connect Speaker Harnesses

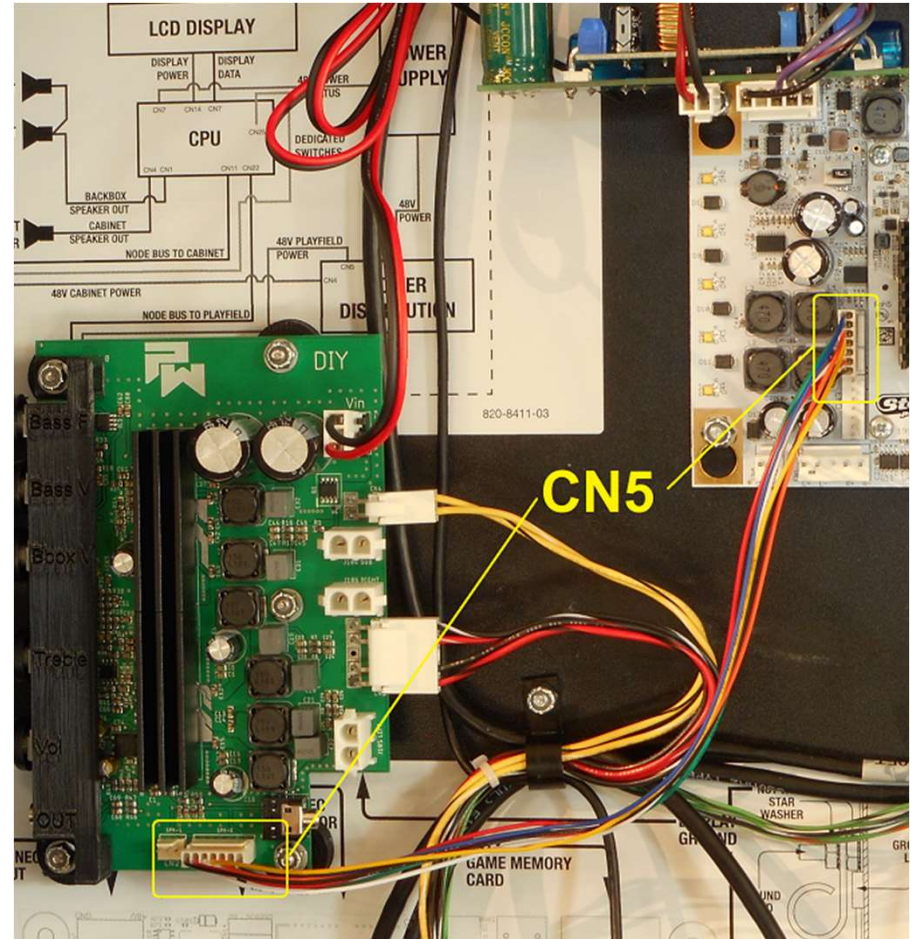
1. Relocate the 2-wire yellow speaker wire connector from the Spike-2 CPU Node at CN4 to the DIY Amplifier Header CN4.
2. Relocate the 4-wire BLK_RED speaker wire connector from the Spike-2 CPU Node at CN1 to the DIY Amplifier Header CN1.



PINWOOFER

Spike-2 – Line Out Header Connection

1. Connect the 7-pin wire harness between the CN5 header on the Spike-2 CPU Node Board and the CN5 Header on the DIY Amplifier as shown.



PINWOOFER

FINWOODFER

Your DIY amplifier is now ready for use.