

PINWOODFER

Copyright © 2019-2022 SubDude Audio LLC, Idaho, USA. All Rights Reserved. Reproduction, transmission or redistribution of this document or its contents without written permission is prohibited.

Take your time, follow the instructions, relax, and enjoy yourself!

WARNINGS: Perform installation with your pinball machine turned off and unplugged from AC power.

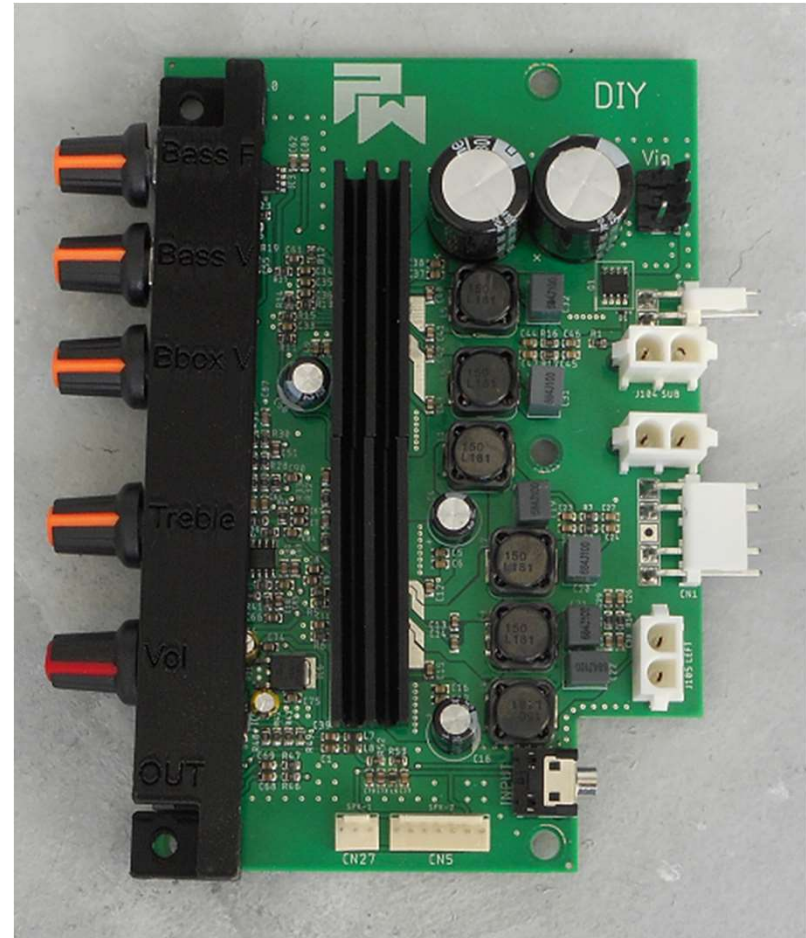


JJP

DIY Amplifier Installation Instructions

JJP PinWoofers™ DIY Amplifier

Shown is the PinWoofers JJP DIY Amplifier.



PINWOOFER

JJP Amplifier Card - Removal

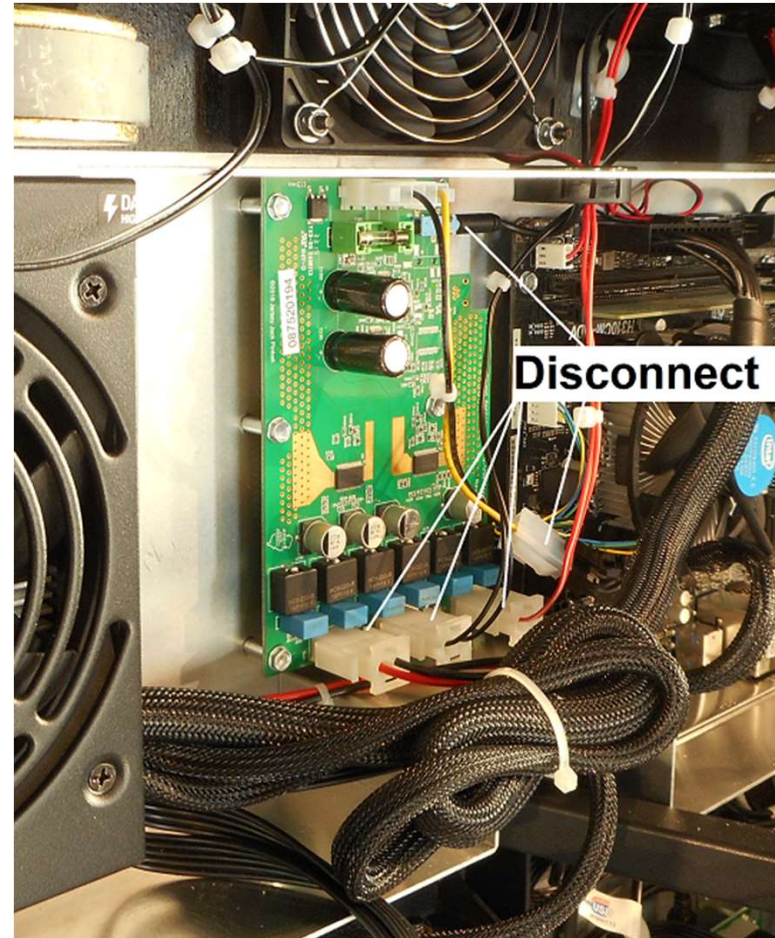
Disconnect all electrical connections on the JJP Amplifier Card:

- Mini-Plug in the upper right-hand corner
- J104 Cabinet Speaker
- J105 Left Backbox Speaker
- J106 Right Backbox Speaker
- Power plug YEL_BLK to ATX Power Connector

Note that there are multiple revisions of the JJP Amplifier so the “J” assignment numbers may vary.

The wire colors among the various JJP titles also varies.

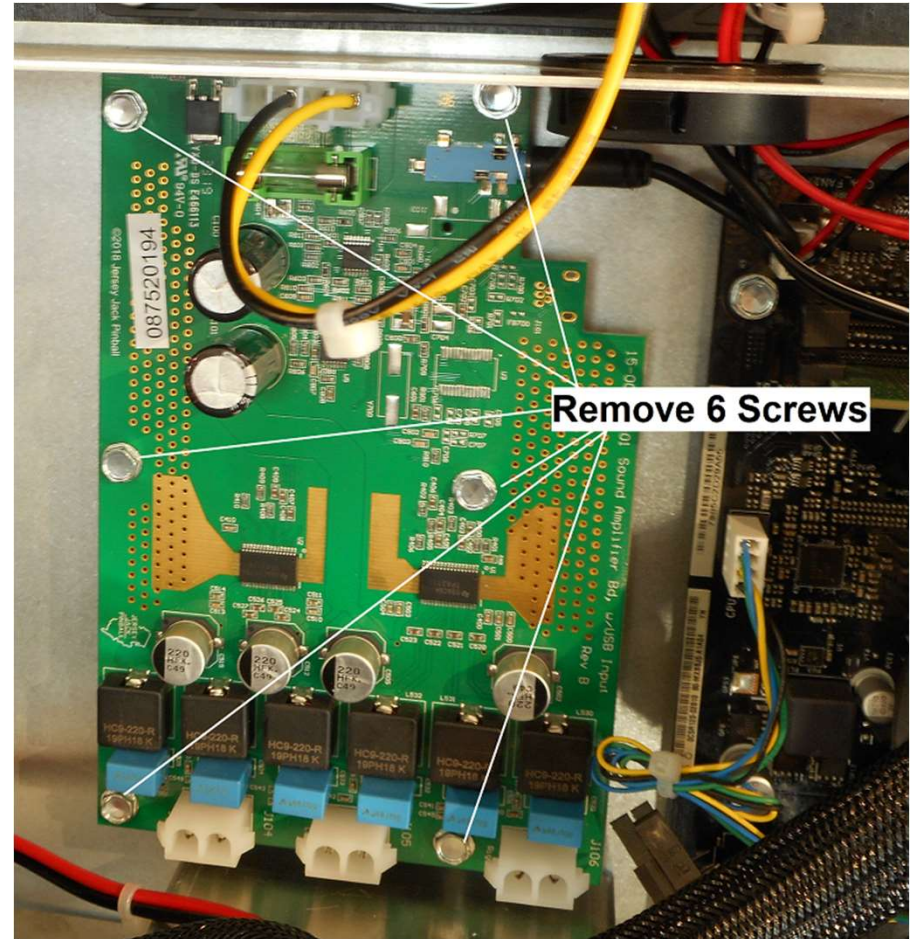
Take notes as you progress.



PINWOOFER

JJP Amplifier Removal

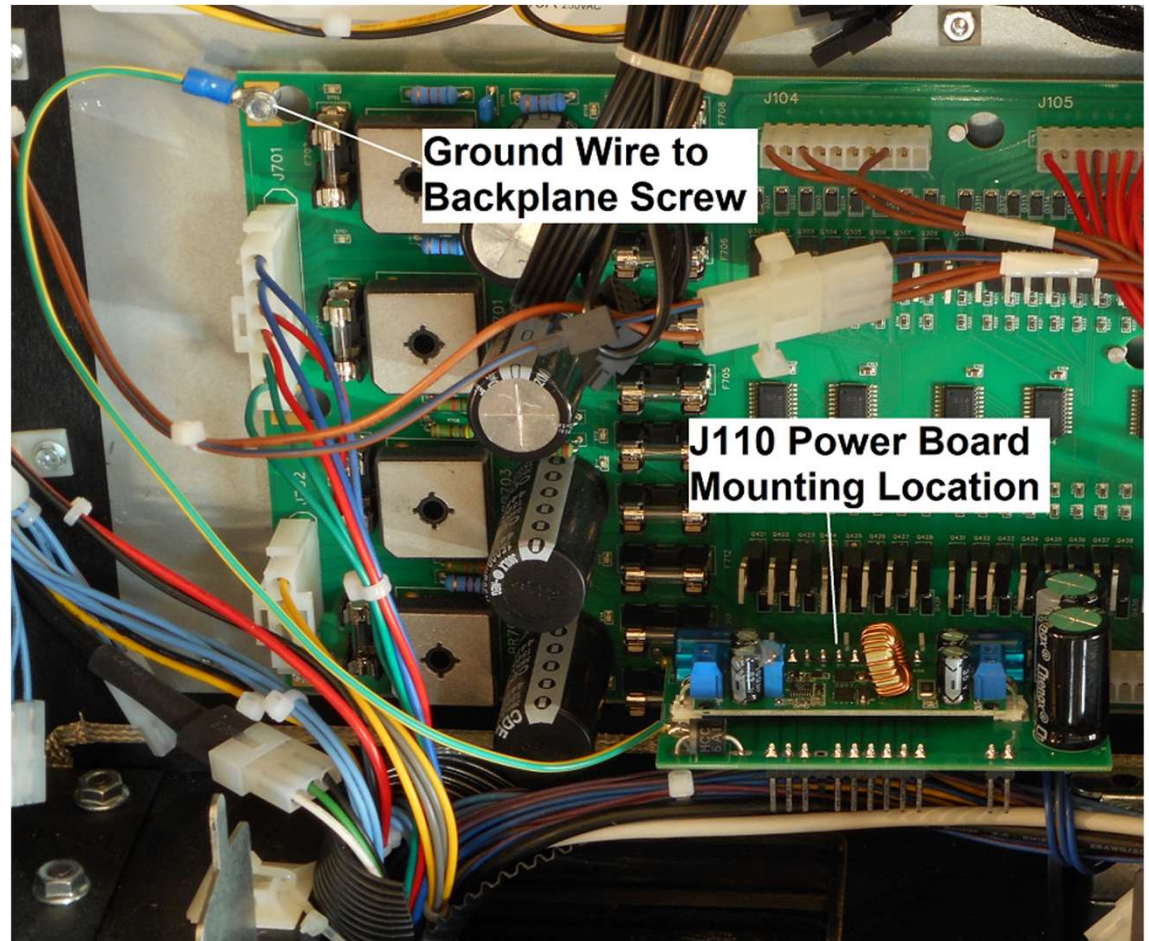
1. Remove the six amplifier mounting screws.
2. Do not discard screws since they will be re-used to mount your DIY amplifier.



PINWOODFER

Mount PinWoofers™ JJP Power Board

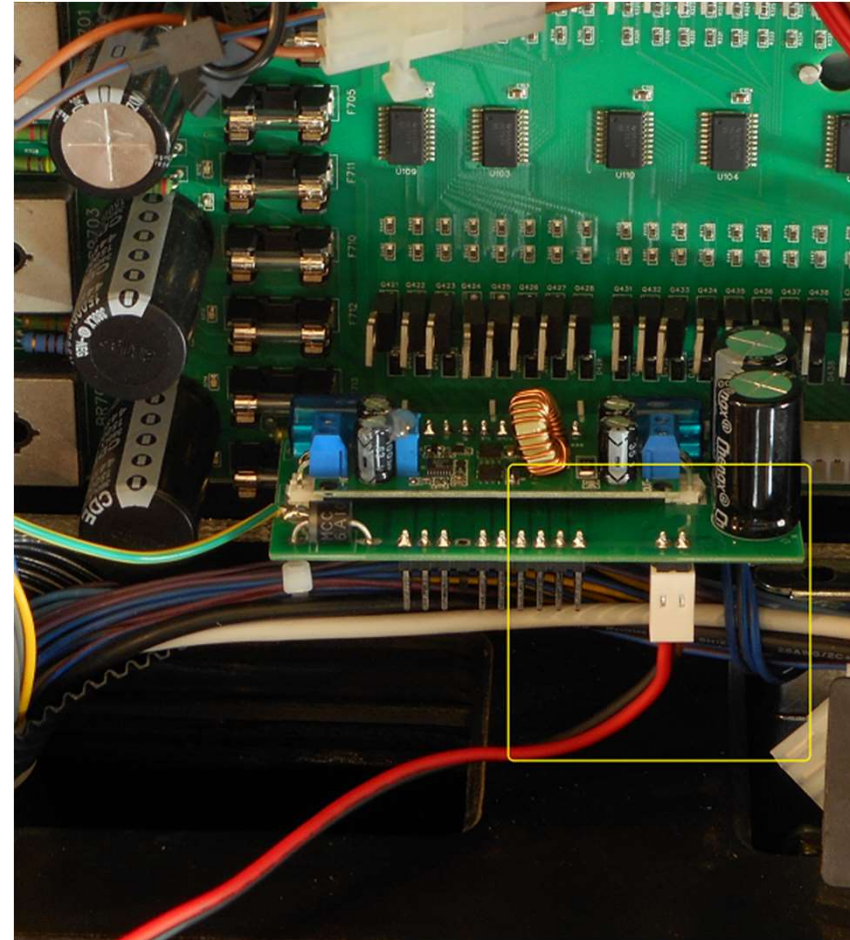
1. Connect the PinWoofers Power Board at location J110. If there is already a connector populated at J110, it can be re-plugged into the PinWoofers Power Board Header (POTC).
2. It is vital to secure the ground wire at the location shown.



PINWOOFER

JJP Power Cable Connection

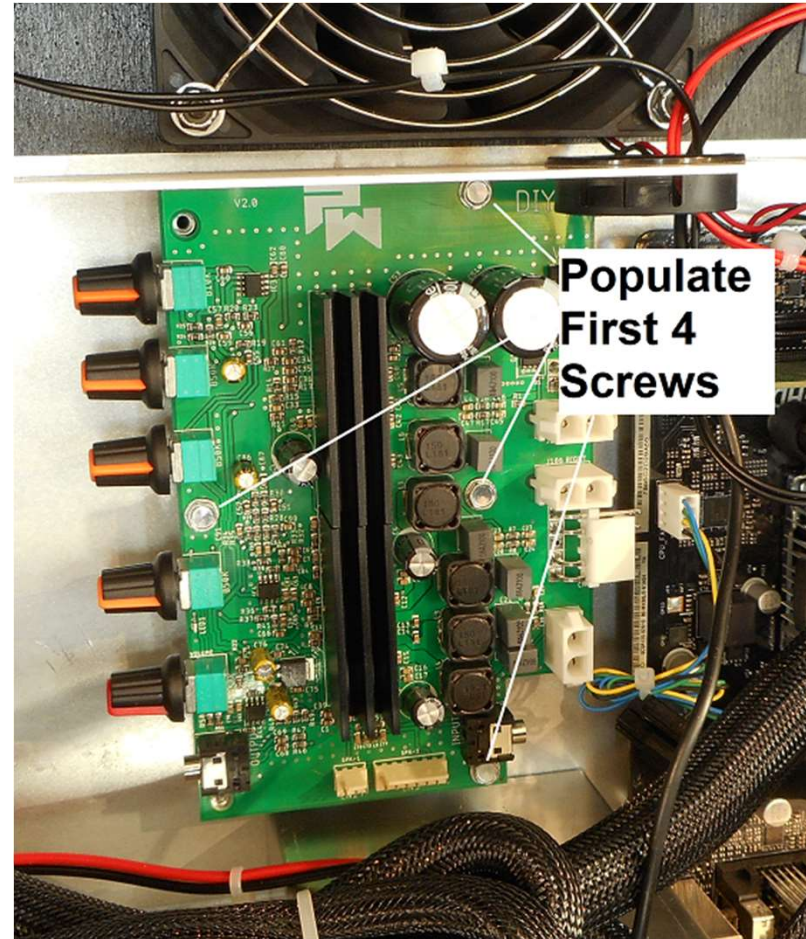
1. Connect the 2-pin Power Cable to the Power Board as shown.



PINWOOFER

Mount Amplifier - Part 1

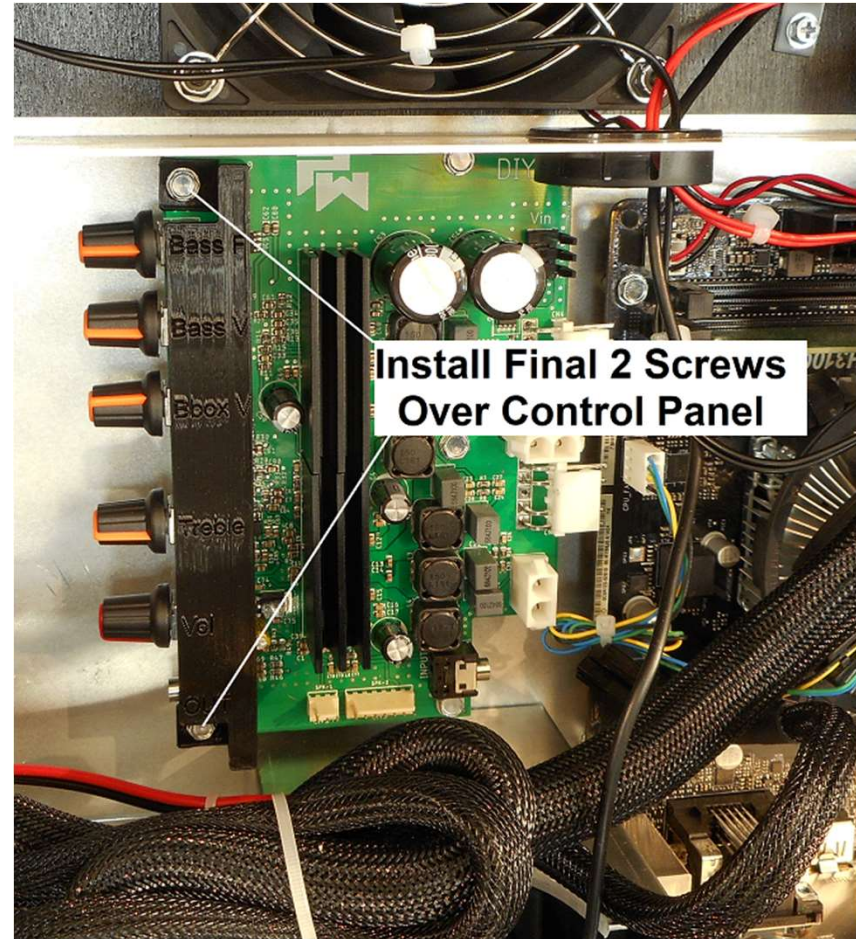
1. Secure the four screws as shown.



PINWOOFER

Mount Amplifier - Part 2

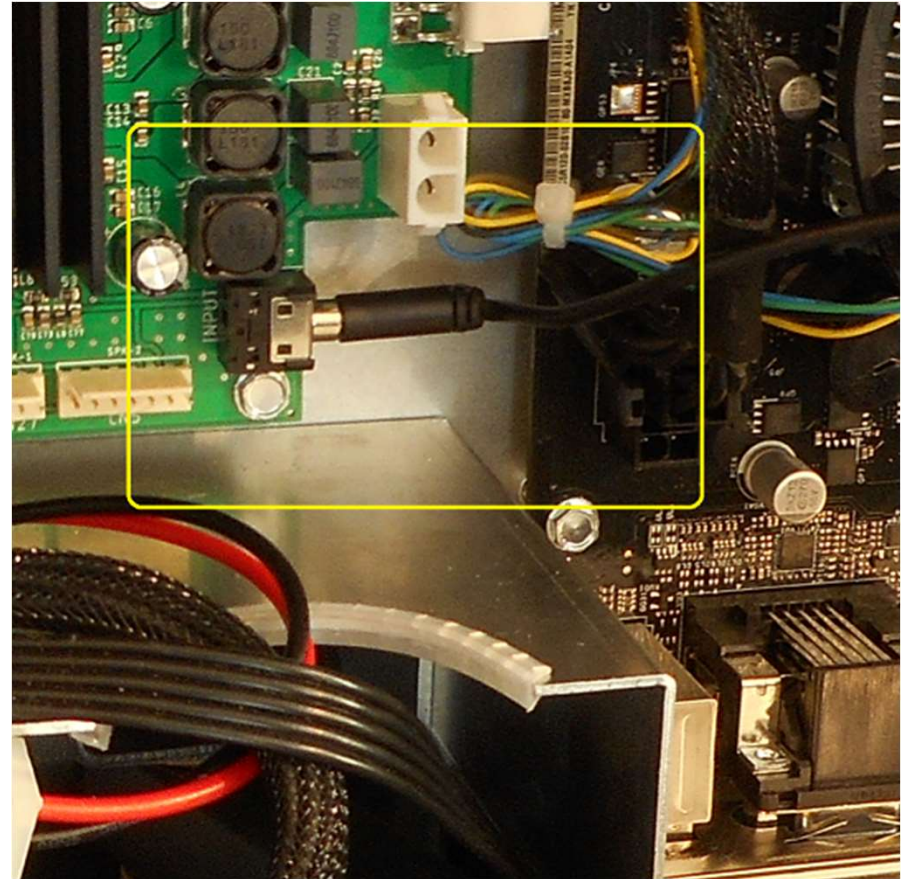
1. Secure the final two screws over the included control panel.



PINWOOFER

JJP – Connect Audio Mini-Plug

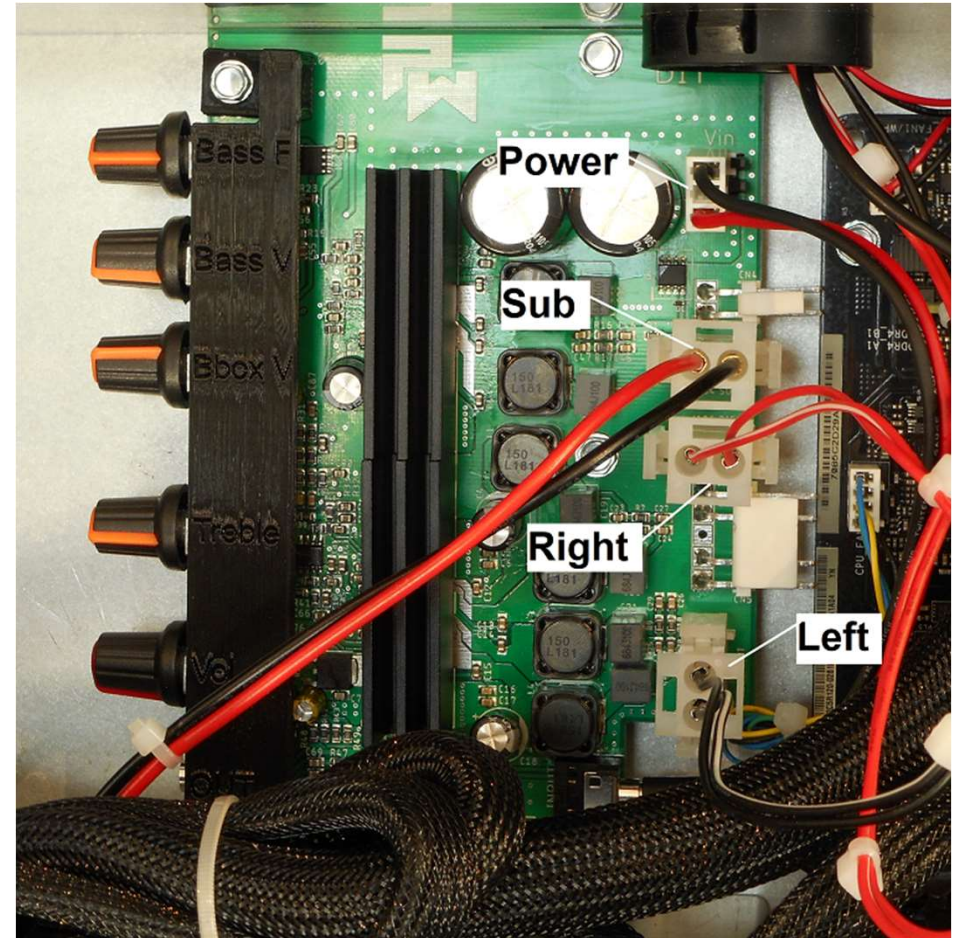
1. Connect the mini-plug at the lower right-hand corner of the DIY Amplifier as shown.



PiNWOOFER

JJP – Connect Power and Speaker Lines

1. Plug the Power Connector to Vin.
2. Plug the Sub/Right/Left Speaker Lines to the appropriate header.



PINWOOFER

FINWOODFER

Your DIY amplifier is now ready for use.