

PINWOODFER

Copyright © 2019-2023 SubDude Audio LLC, Idaho, USA. All Rights Reserved. Reproduction, transmission or redistribution of this document or its contents without written permission is prohibited.

Take your time, follow the instructions, relax, and enjoy yourself!

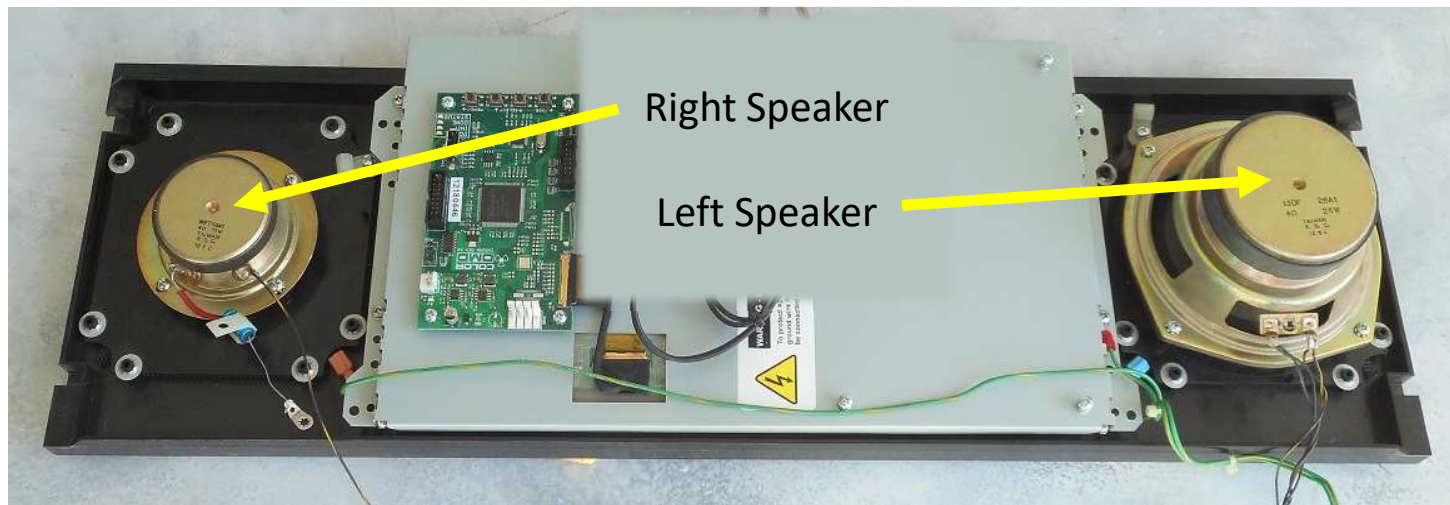
WARNINGS: Perform installation with your pinball machine turned off and unplugged from AC power.



PinWoofers WPC95 Backbox Speaker Installation Instructions

WPC95 Speaker Panel

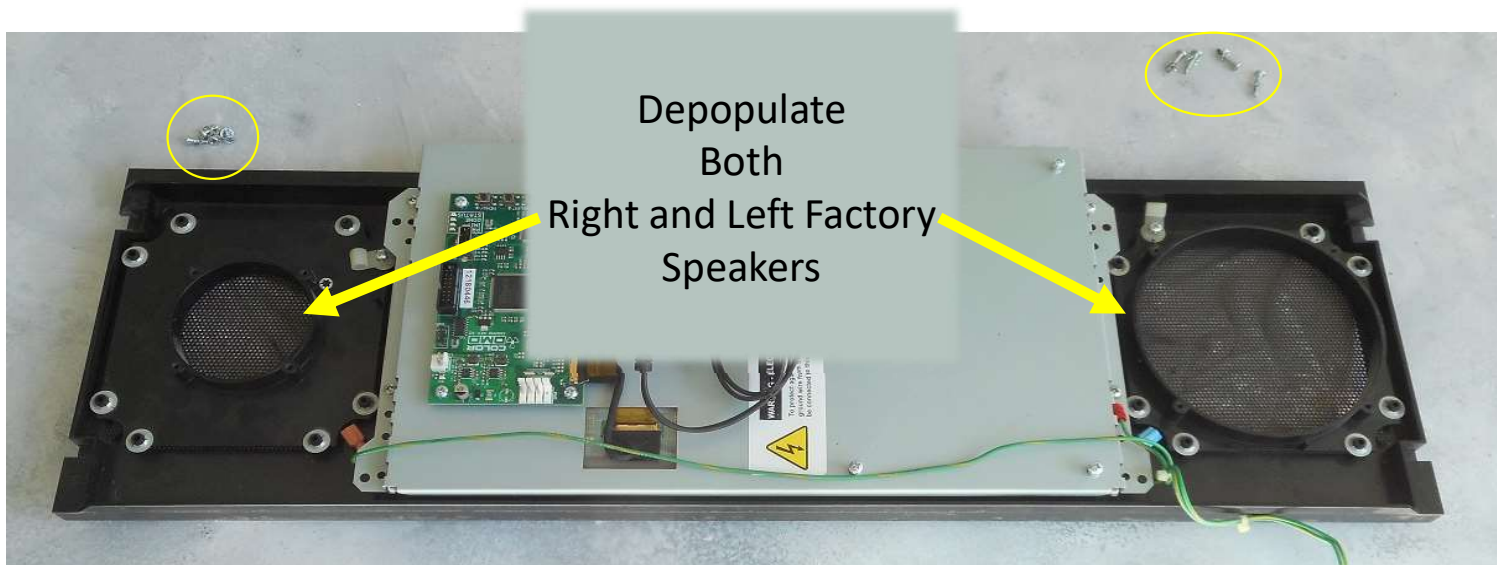
- A typical WPC95 Speaker Panel is shown below.
- Shown is the rear of the Speaker Panel.
- Left and Right Speaker designations are referenced as seen from the front of the Speaker Panel.



PiNWOODER

Depopulate Factory Speakers

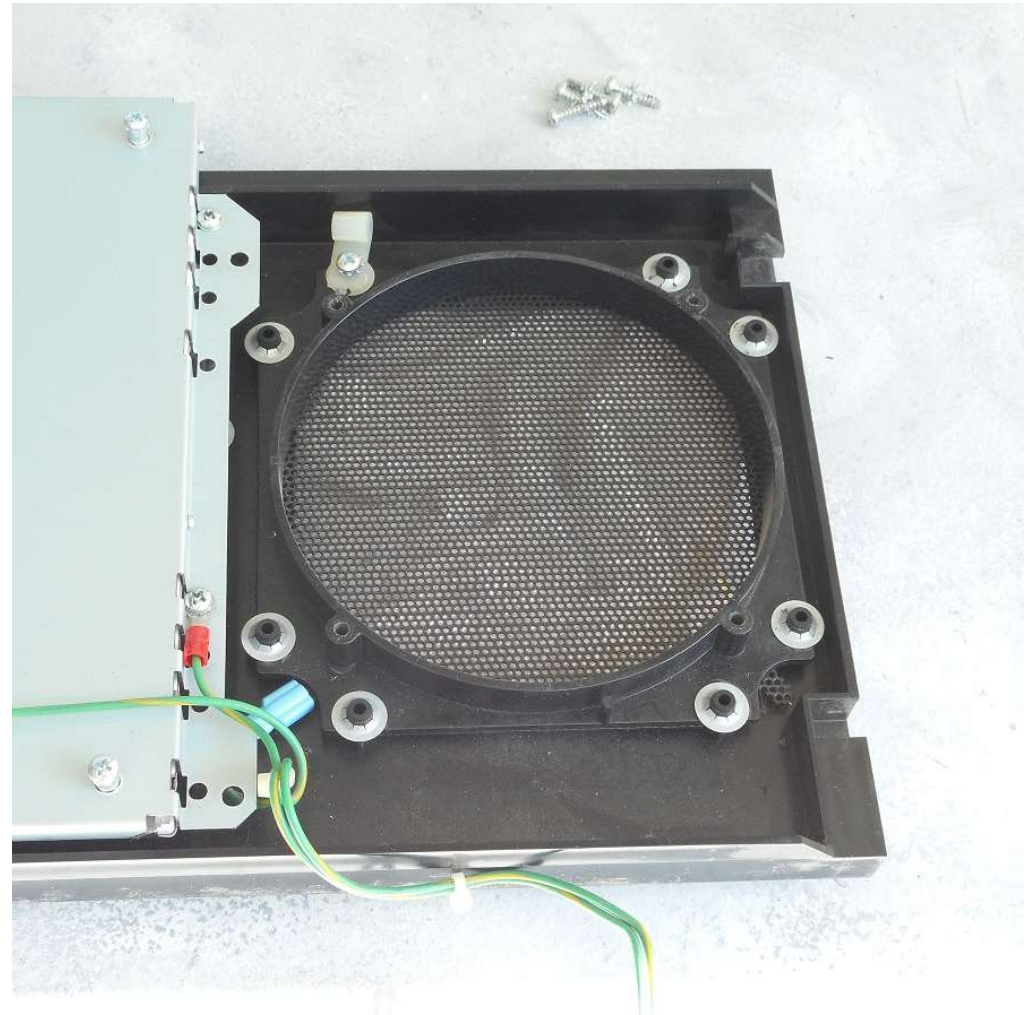
- Remove the factory speakers and set them aside.
- Retain the factory speaker mounting screws for reuse later as shown in the yellow circles.



PiNWOOFER

Left-Side Speaker Mount

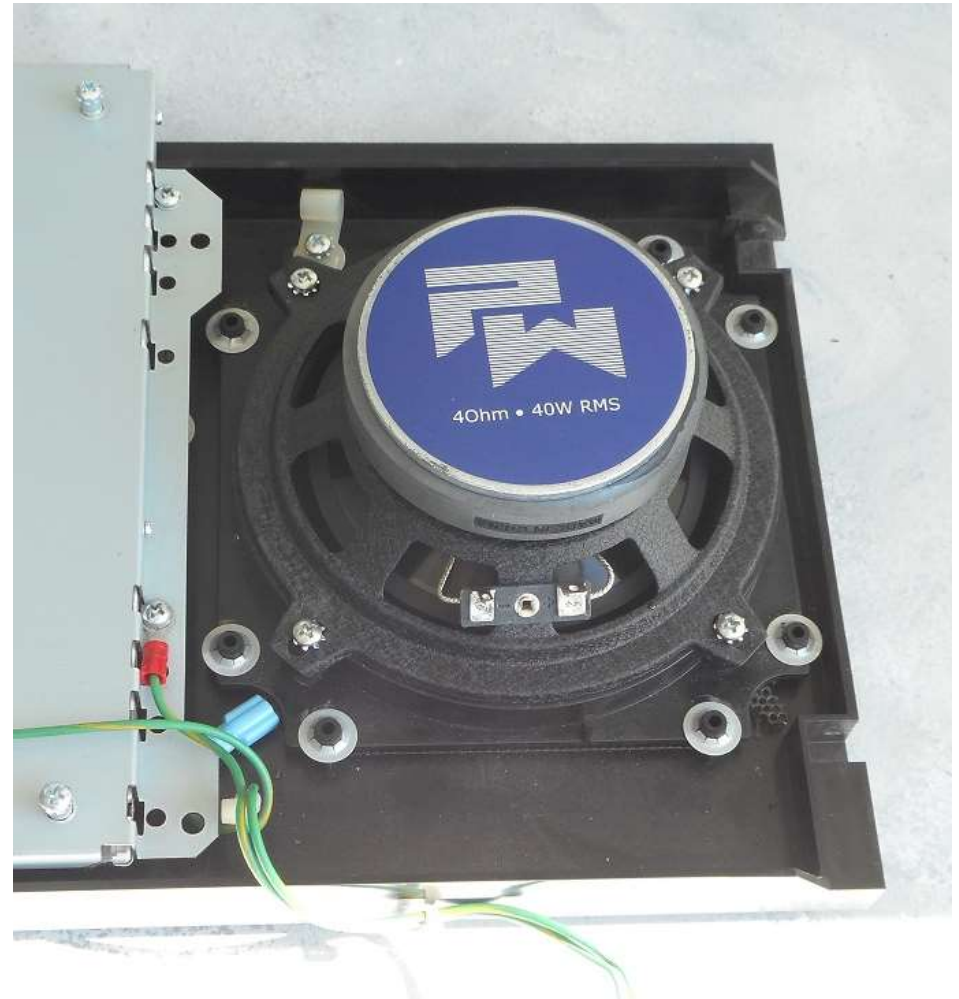
- The left-side panel speaker mount is shown.



PiNWOOFER

Populate Left-Side Speaker

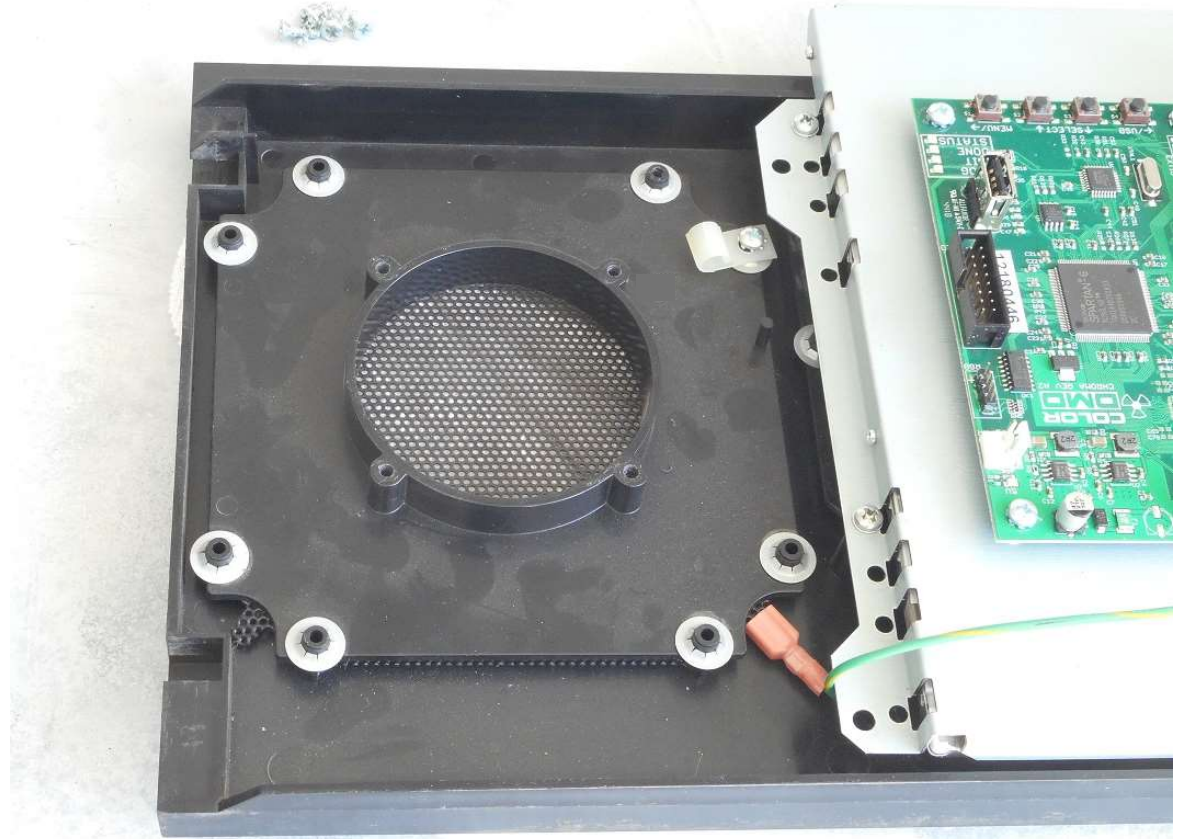
- Mount your new PW label speaker as shown to the right.
- Reuse the original four screws and four washers.
- Completely tighten, but do not over tighten and break the PVC threaded mounting bosses.



PiNWOODER

Right-Side Speaker Mount

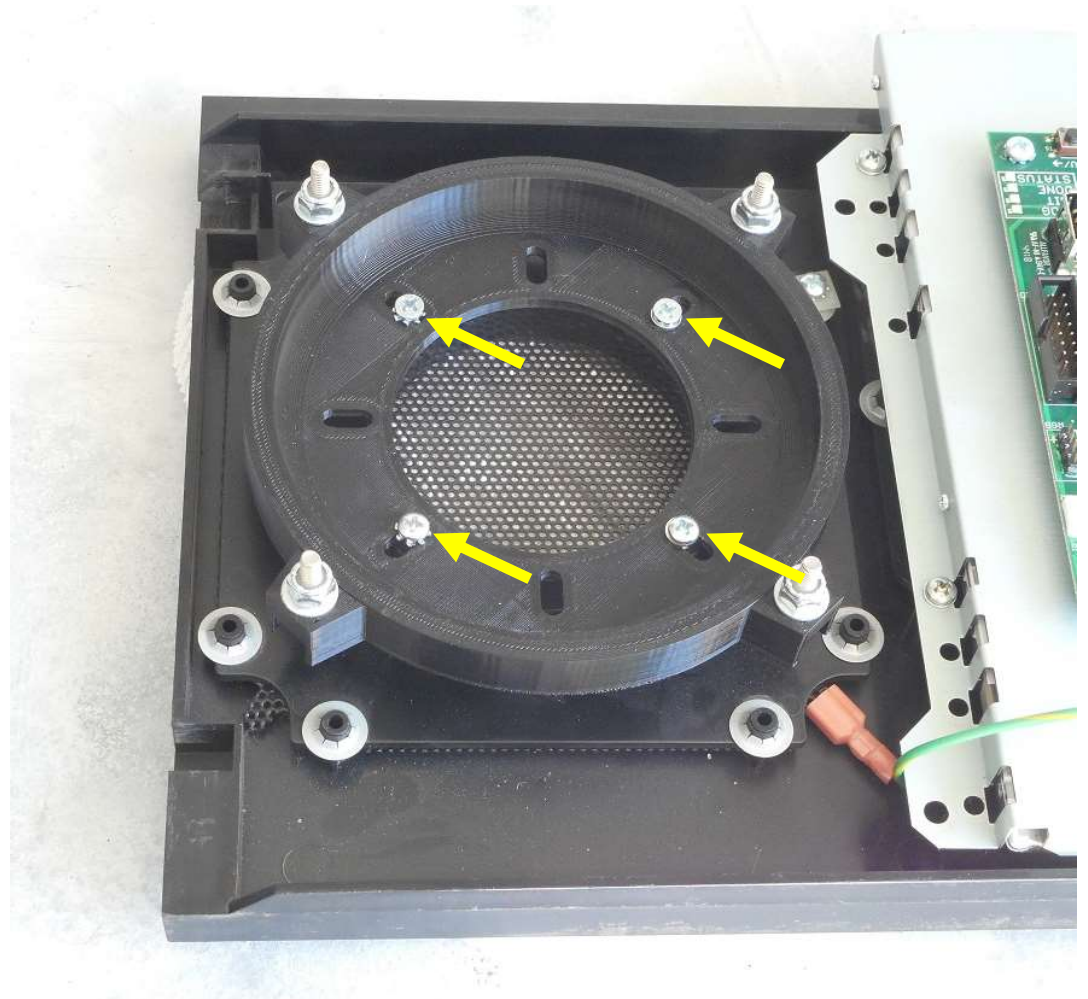
- The right-side panel speaker mount is shown.



PiNWOOFER

Mount the Right-Side Speaker Interposer Ring

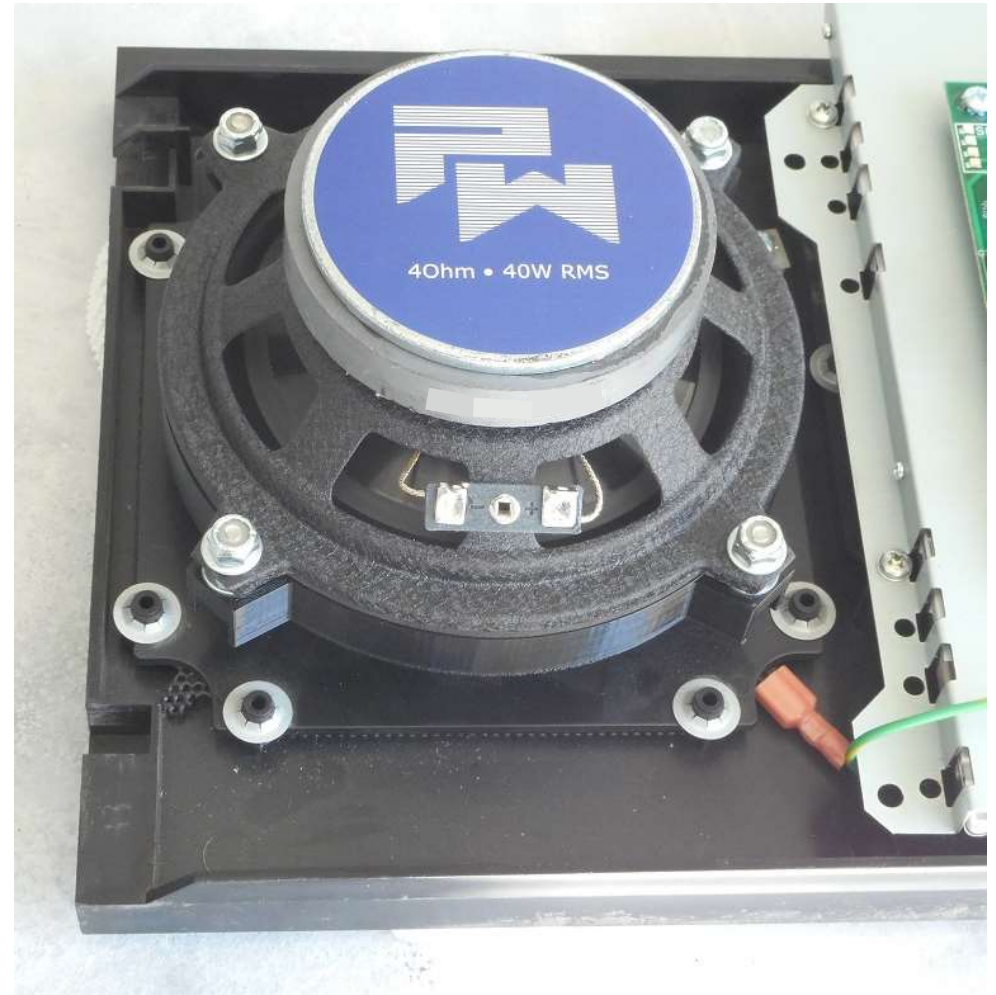
- Center the provided WPC95 Speaker Interposer on the mounting bosses.
- Reusing the original four screws and four washers, secure the ring at the mounting locations shown by the yellow arrows.
- Completely tighten, but do not over tighten and break the PVC thread mounting bosses.



PiNWOODER

Populate Right-Side Speaker

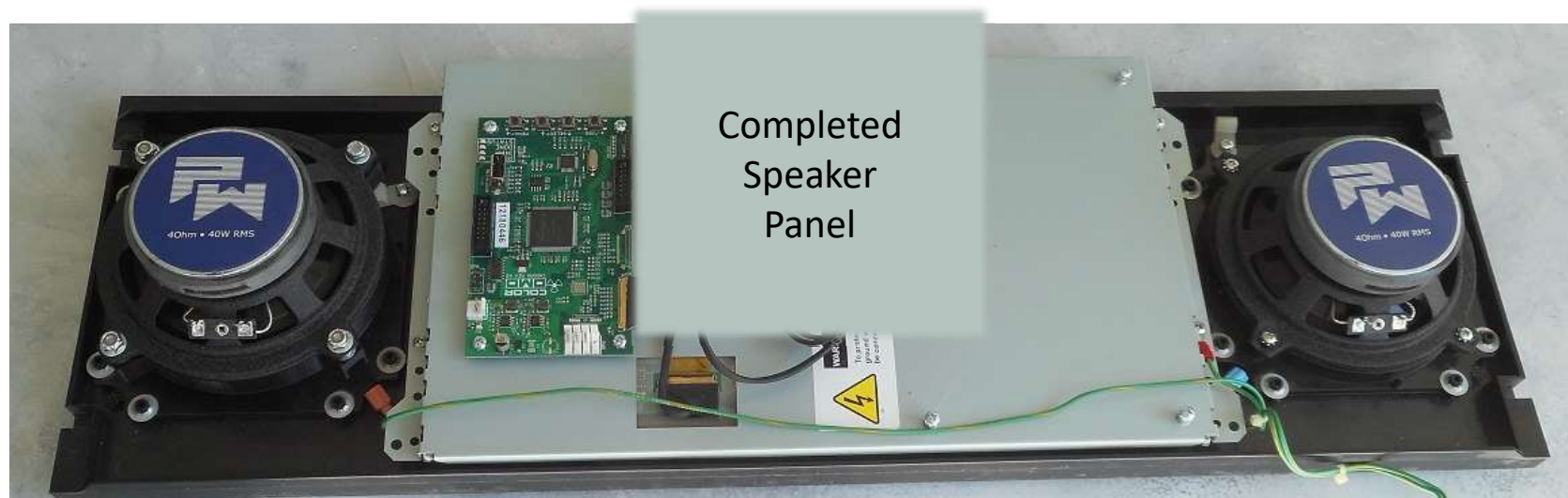
- Mount your new PW labeled speaker as shown to the right, using the provided four #8 Flat Washers and four #8-32 Nylon Locking Nuts.
- Completely tighten, but do not over tighten.



PiNWOOFER

Completed Speaker Panel

- Shown below is a view of the back side of the speaker panel, with new PW Label Speakers mounted.



PiNWOODER

FINWOOFER

End of Document