

PINWOODFER

Copyright © SubDude Audio LLC, Idaho, USA. All Rights Reserved. Reproduction, transmission or redistribution of this document or its contents without written permission is prohibited.

Take your time, follow the instructions, relax, and enjoy yourself!

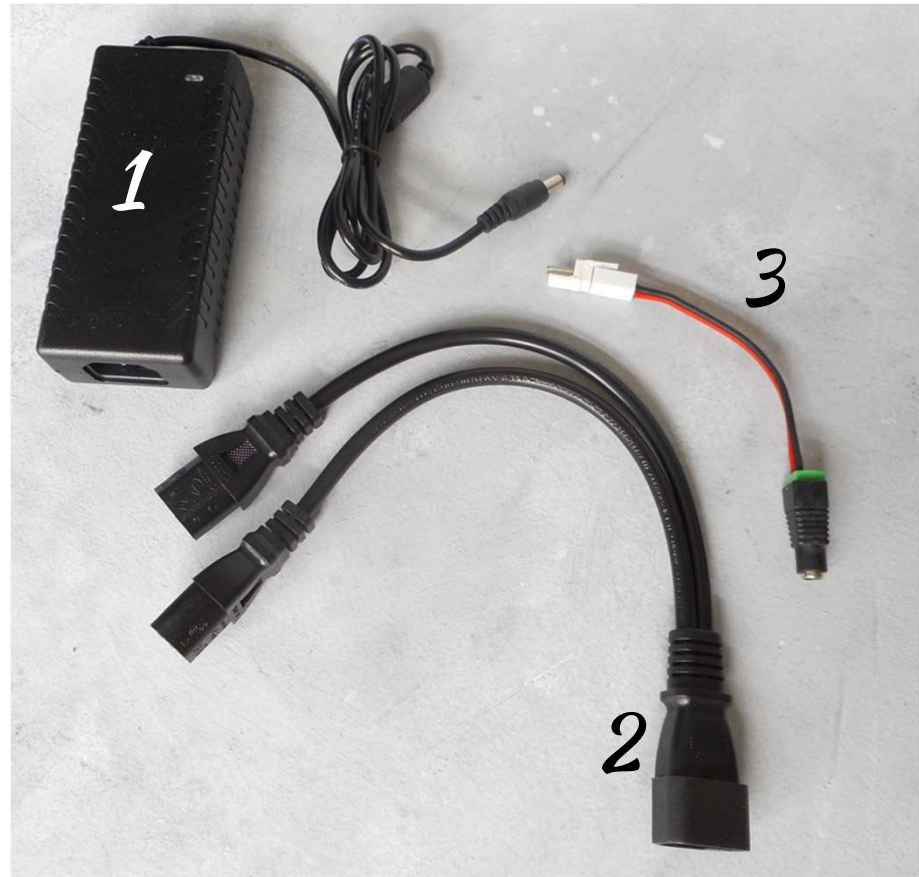
WARNINGS: Perform installation with your pinball machine turned off and unplugged from AC power.



PinWoofers JJP Alternate Power Solution Instructions

Kit Components

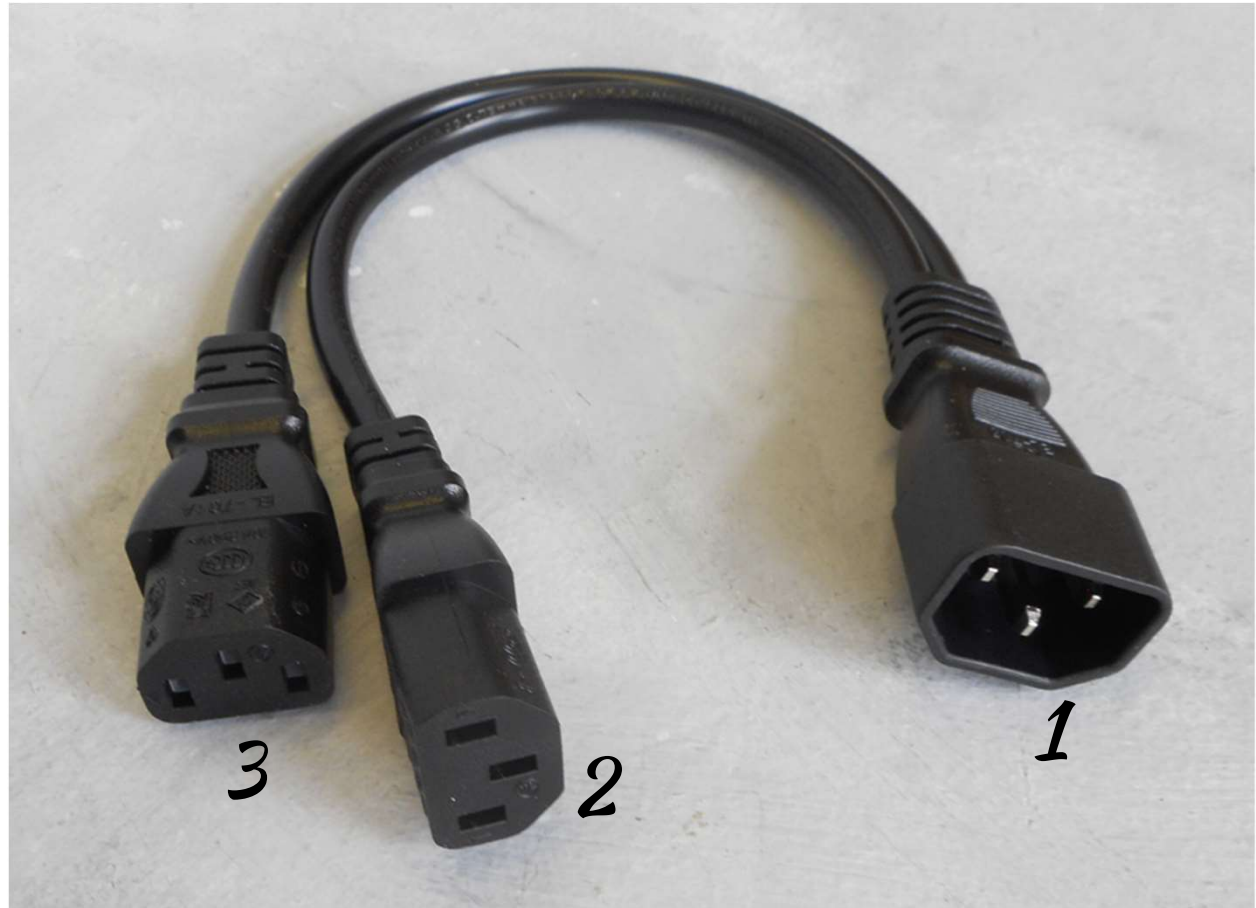
- Shown to the right are the JJP Alternate Power Solution Kit Components:
1. AC to DC Power Adapter
 2. AC Power Splitter
 3. DC Power Stub



PiNWOODFER

Overview of AC Power Splitter

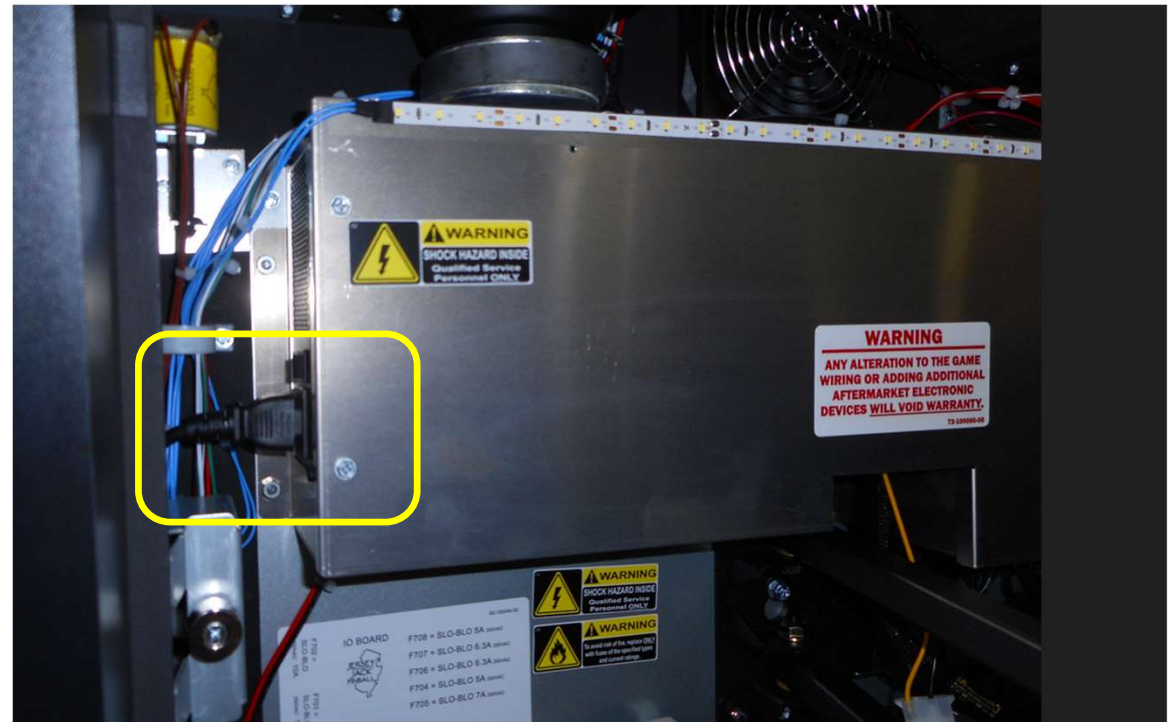
- The AC Power Splitter is shown to the right.
1. This is the “AC Splitter Plug”.
 2. This is one of two “AC Splitter Receptacle”(s).
 3. This is one of two “AC Splitter Receptacle”(s).



PINWOOFER

Locate AC Power

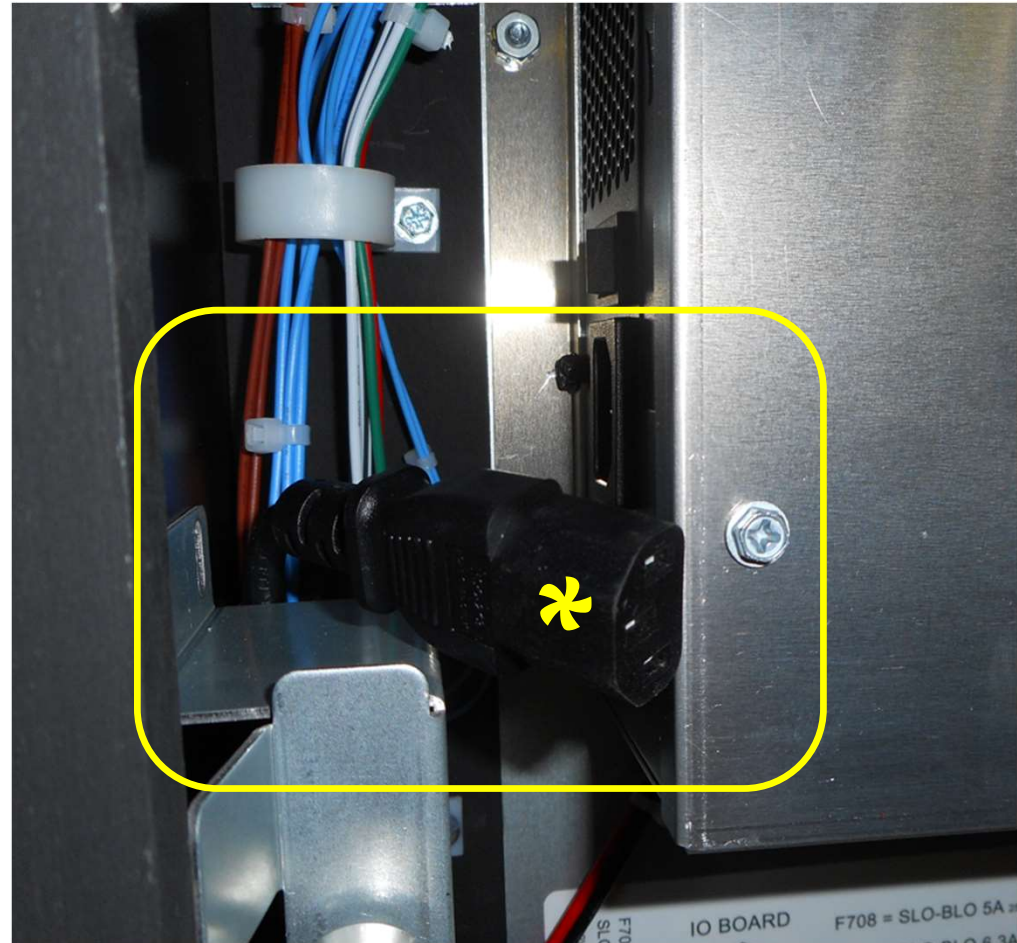
- On the left side of the aluminum enclosure found in the backbox, locate the AC Power connection highlighted in the yellow box.



PINWOOFER

Un-Plug Machine Receptacle

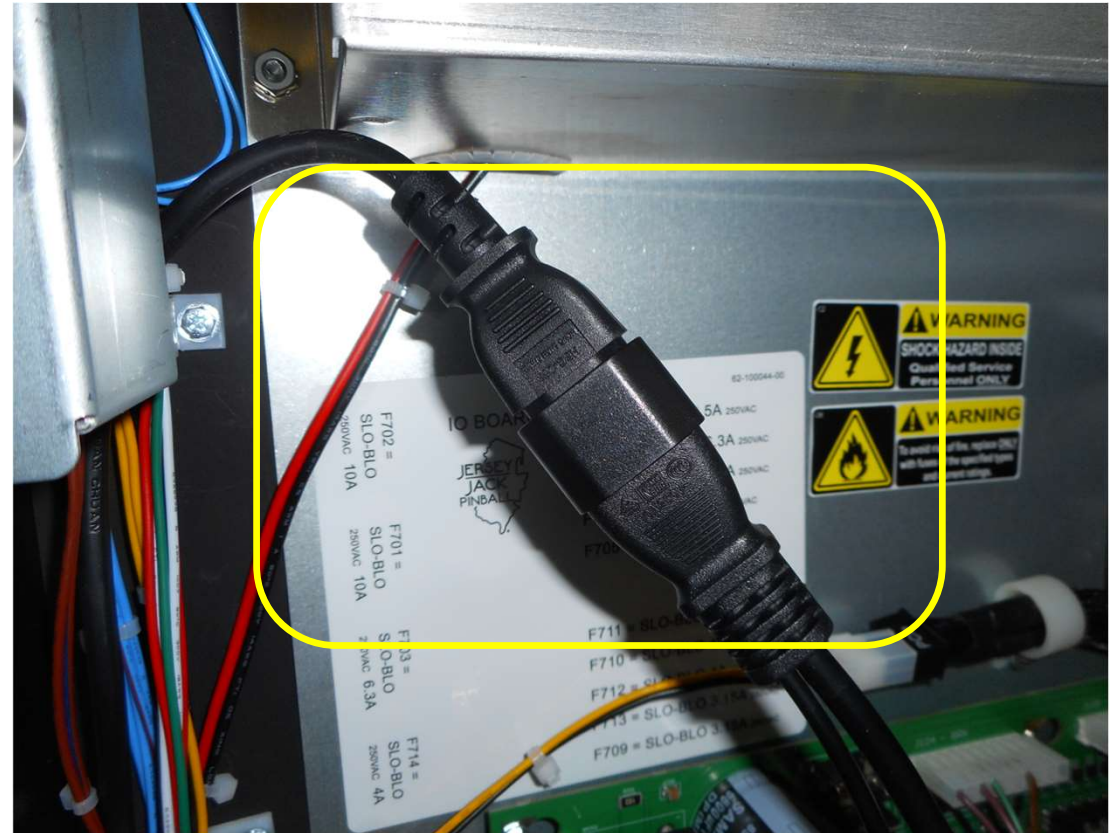
- Unplug the AC Power Cable from the enclosure.
- The item highlighted with the yellow star (*) to the right will be referred to as the “Machine AC Receptacle”.



PINWOOFER

Connect Power - 1

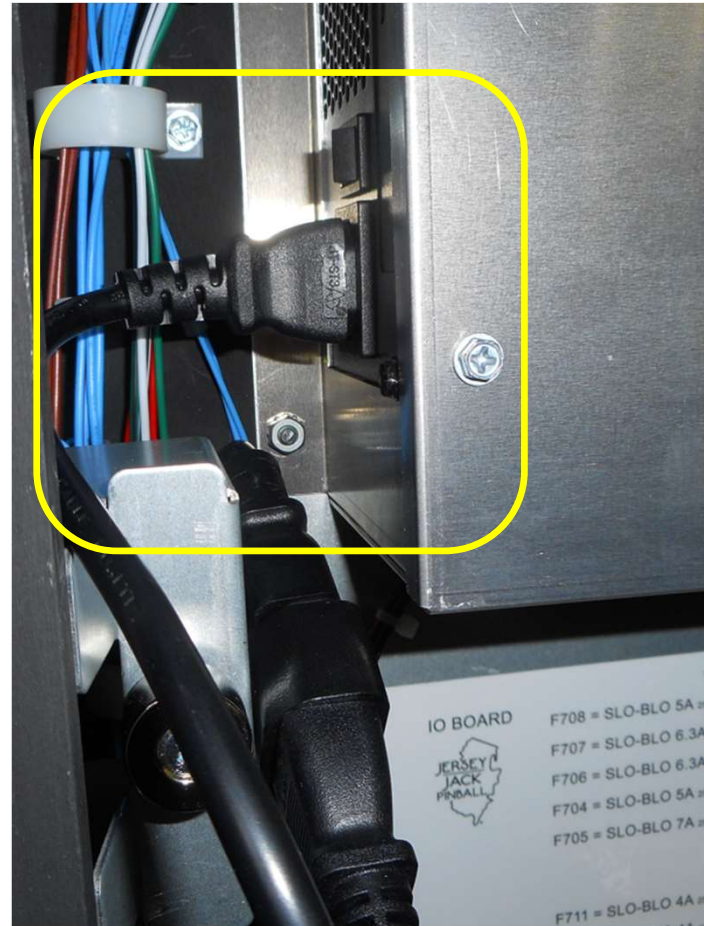
- Connect the Machine AC Receptacle (from the last step) to the AC Splitter Plug as shown to the right.



PINWOOFER

Connect Power - 2

- Plug one AC Splitter Receptacle to the enclosure plug as shown in the yellow box.



PINWOOFER

Connect Power - 3

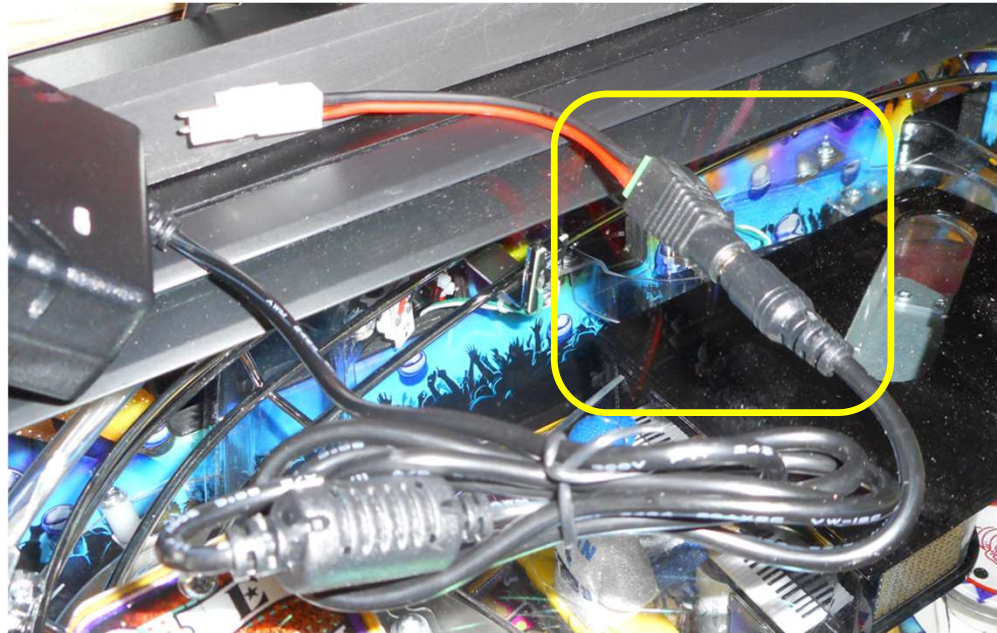
- Plug the other AC Splitter Receptacle to the provided AC to DC Power Adapter plug as shown in the yellow box.



PINWOOFER

Connect Power - 4

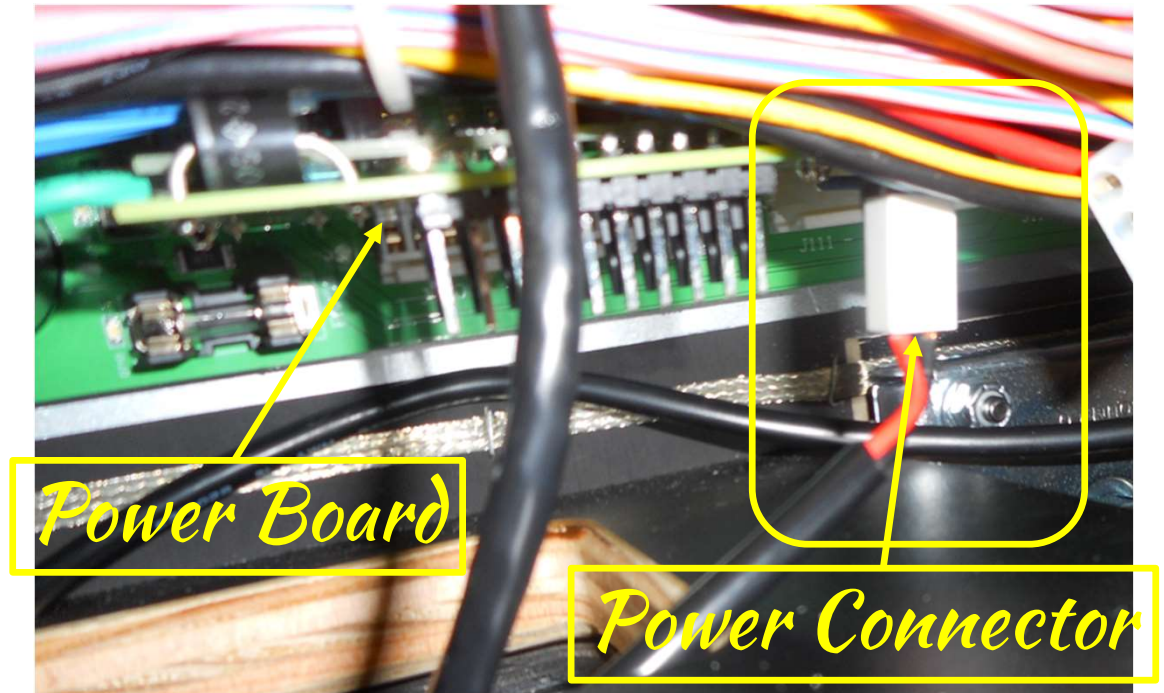
- Connect the DC Power Stub to the DC Output of the AC to DC Power Adapter as shown in the yellow box to the right.



PiNWOODFER

Connect AC Power - 5

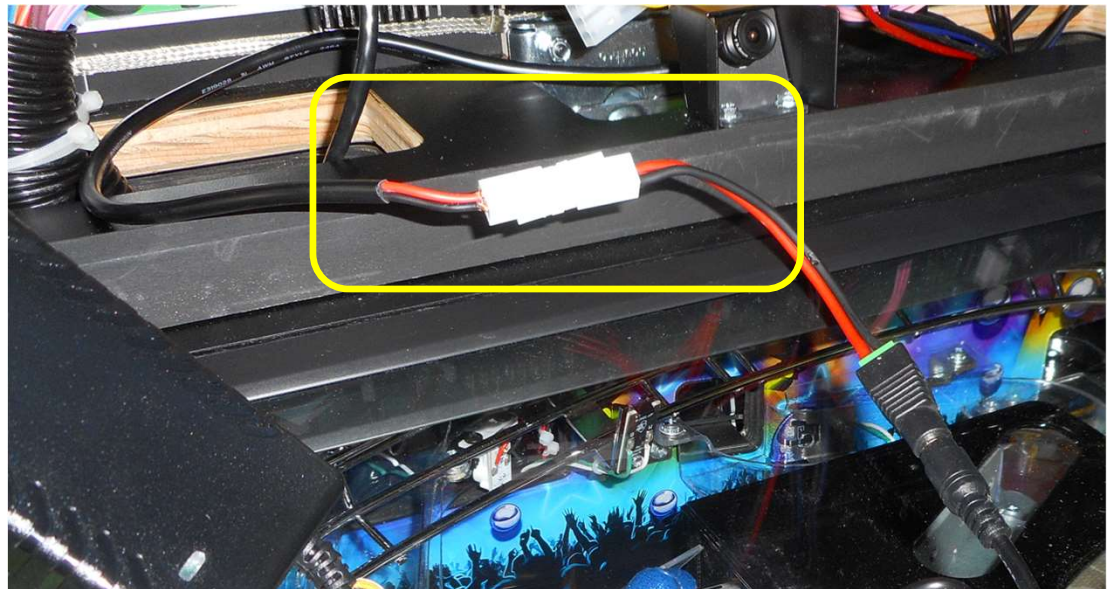
- Locate the PinWoofers Harness DC Power Connector at J110 as shown to the right.
- Un-plug the power connector at this time.
- **De-Install the PinWoofers Power Board now and set it aside. This is critical and must be performed to realize the benefit of the Alternate Power Solution.**



PINWOOFER

Connect AC Power - 6

- Join the PinWoofers Harness Power Connector to the DC Power Stub.
- Ensure that red goes to red, and black goes to black.
- Tuck away the new AC to DC Power Adapter and all wiring to a safe location.
- Your alternate power solution is ready for use.
- Power is turned on and off by the main Machine AC Switch.



PINWOOFER

FINWOODSER

End of Document