

PINWOODFER

Copyright © SubDude Audio LLC, Idaho, USA. All Rights Reserved. Reproduction, transmission or redistribution of this document or its contents without written permission is prohibited.

Take your time, follow the instructions, relax, and enjoy yourself!

WARNINGS: Perform installation with your pinball machine turned off and unplugged from AC power.



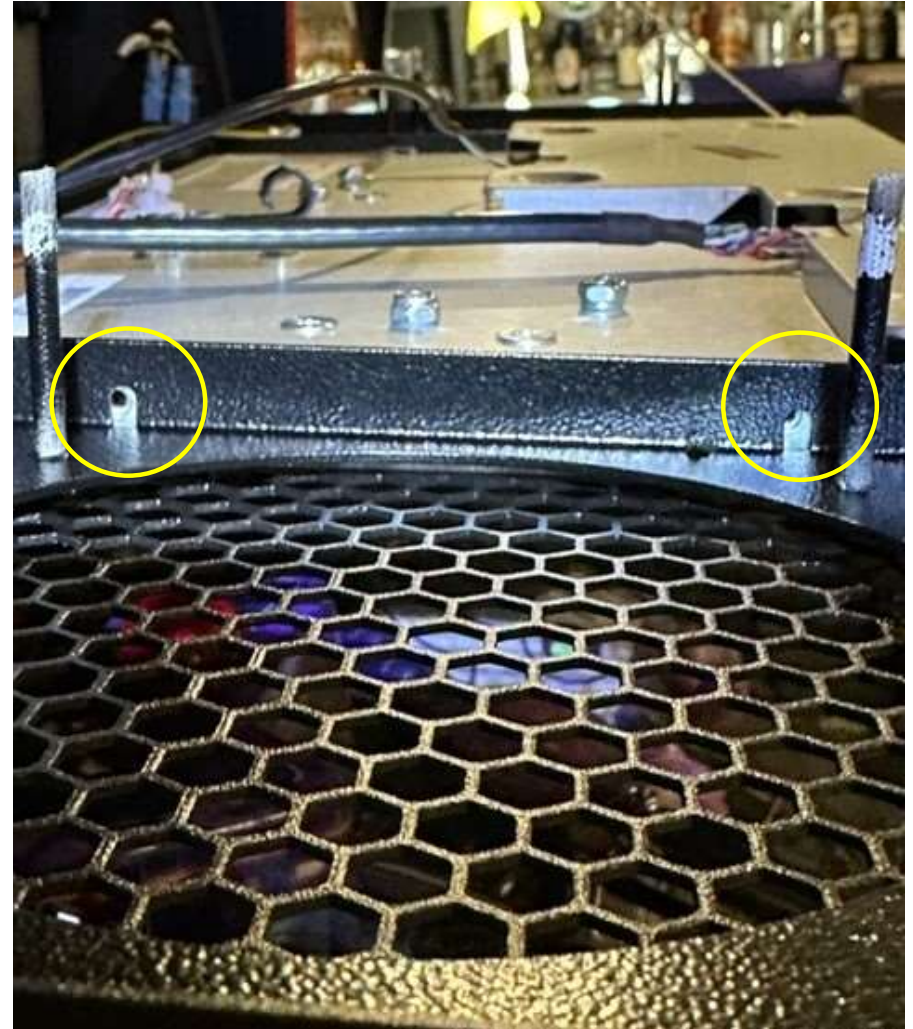
PinWoofers – 5.25in Spike-2 Speaker Plate Instructions

Installation Video:

<https://youtu.be/GJnpu82xjMI>

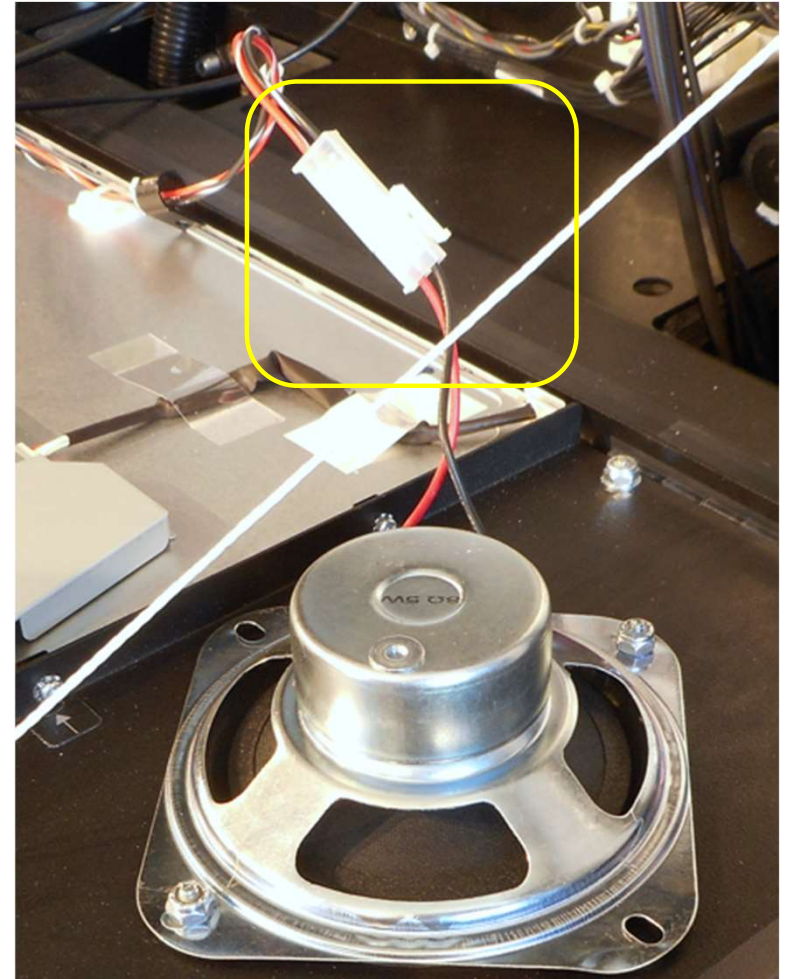
Before you Begin

- Install only one plate at a time. (Left or Right.)
- DO NOT attempt to remove both the left and the right speaker plates at once.
- If both plates are removed (or loosened), the entire monitor assembly will “float” behind the speaker panel, and it will be difficult to get the new plate assemblies to align to the monitor threads as shown to the right.
- If you end up in this situation, you’ll need to loosen all plate nuts and make adjustments until the plate slots can be re-aligned to the monitor threads.



Disconnect Factory Speaker Connector

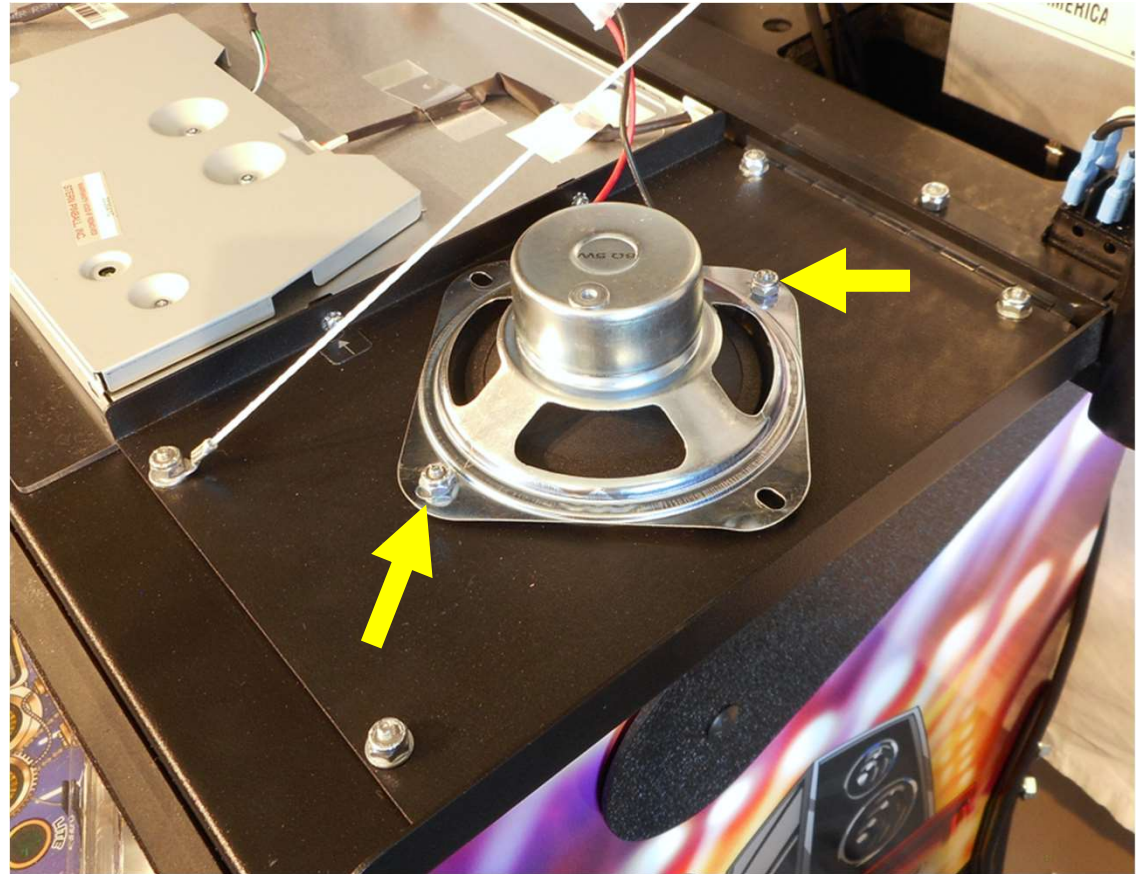
- Shown in the yellow box, disconnect the factory speaker quick-connector.



PiNWOODFER

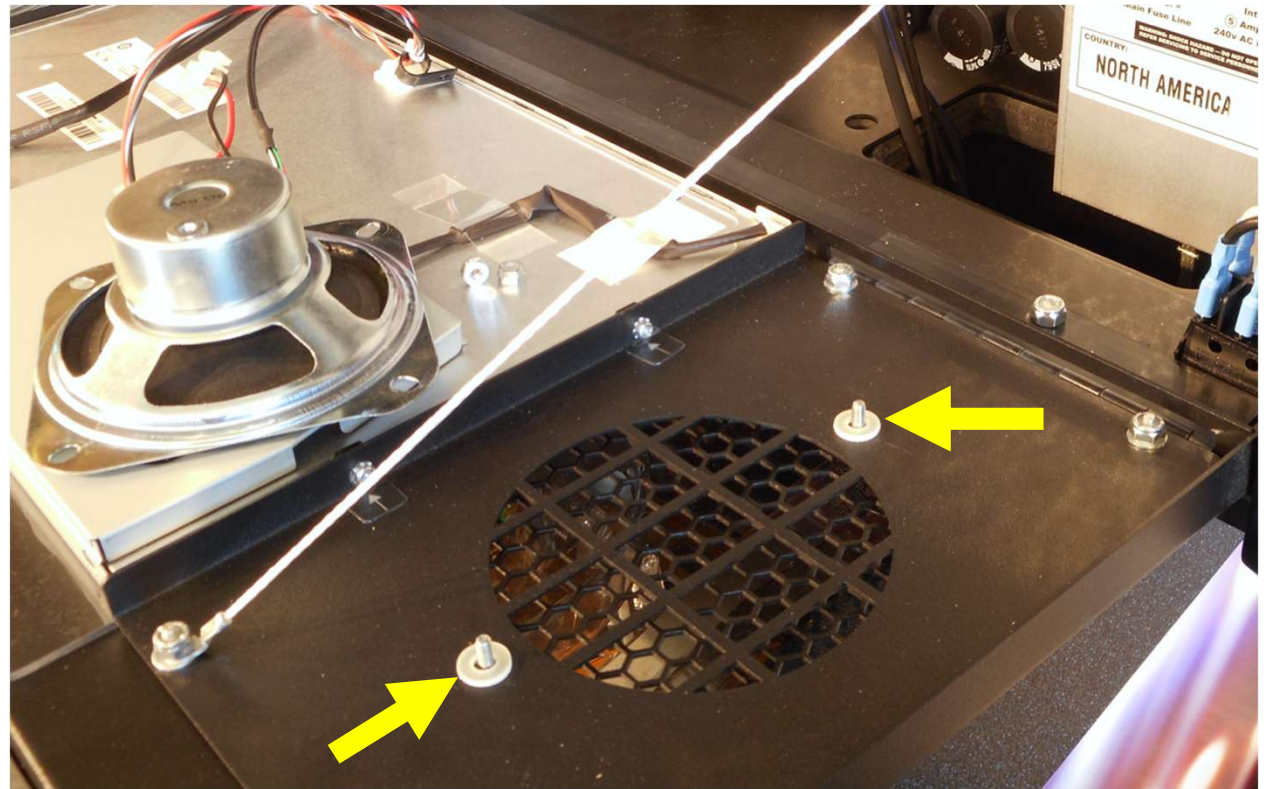
Remove Factory Speaker - 1

- Remove the (two) nuts and any washers present on the factory speaker as indicated.
- Remove the speaker now.



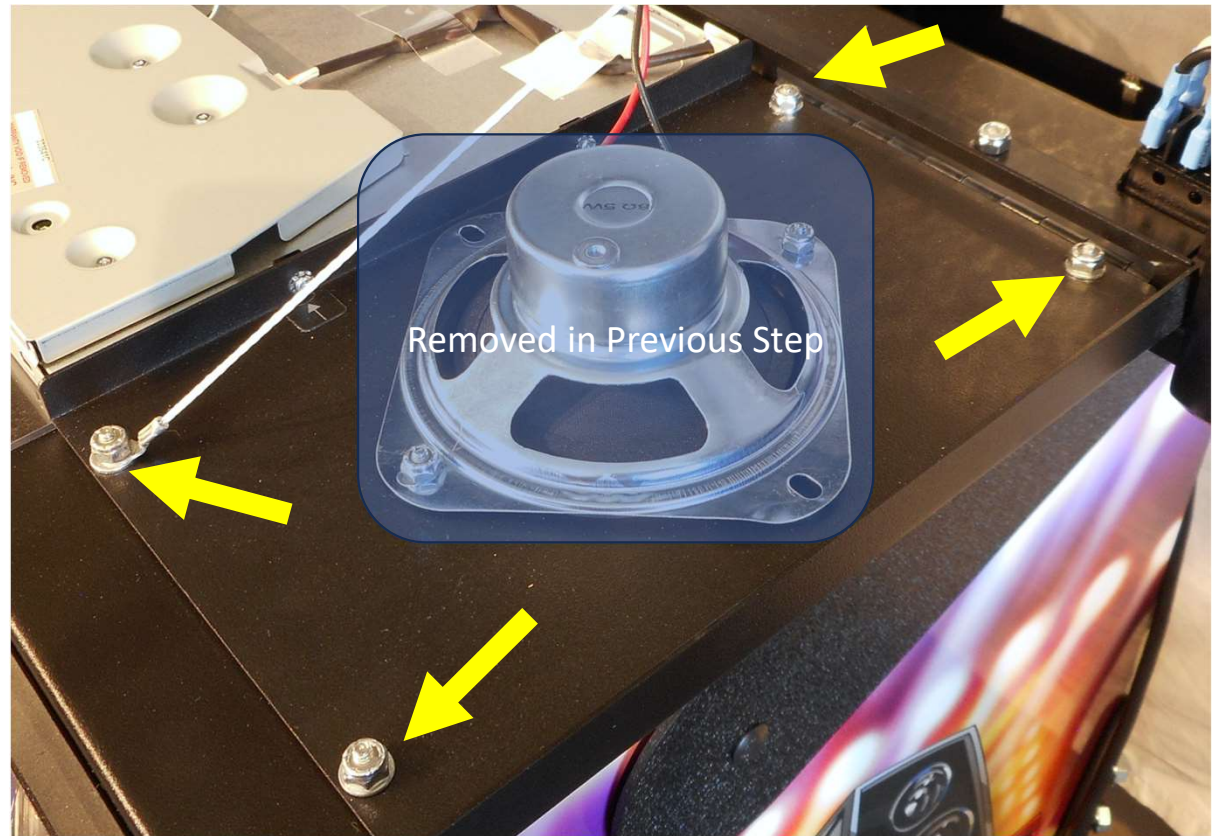
Remove Factory Speaker - 2

- Discard any nylon washers found under the factory speaker as shown.



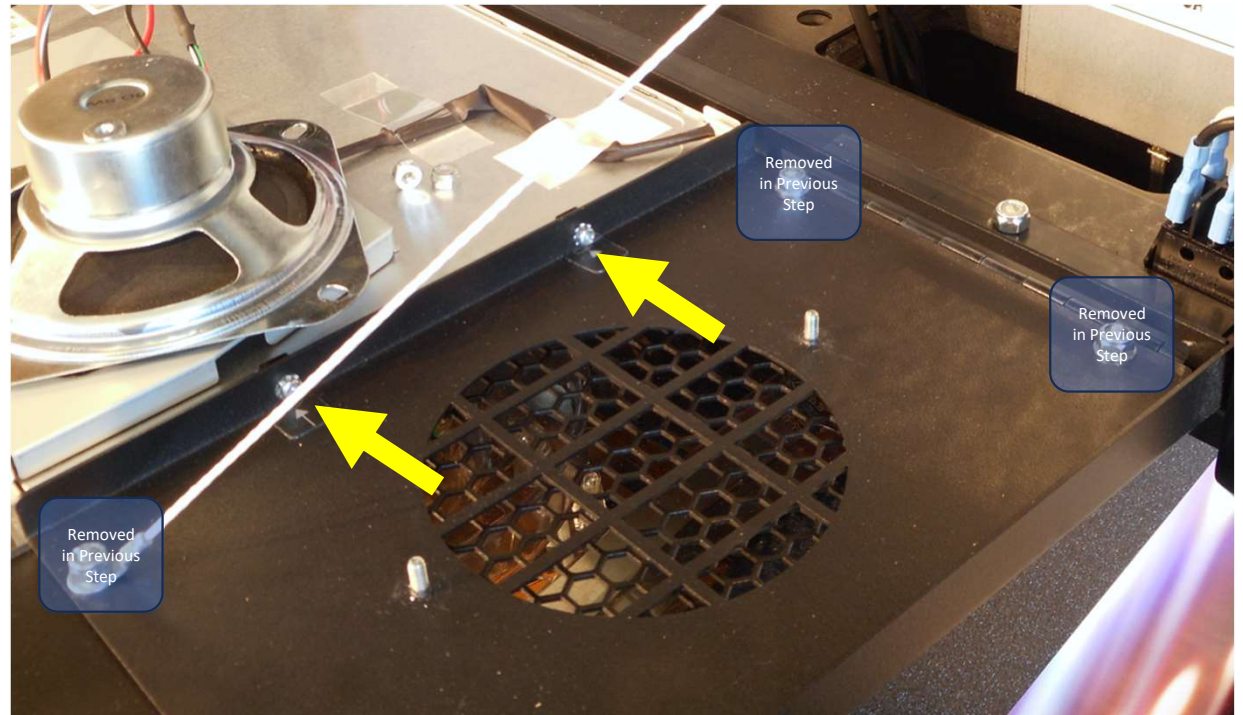
Disconnect Factory Speaker Plate - 1

- Next, remove the (four) nuts and any washers present on the factory speaker plate as indicated.



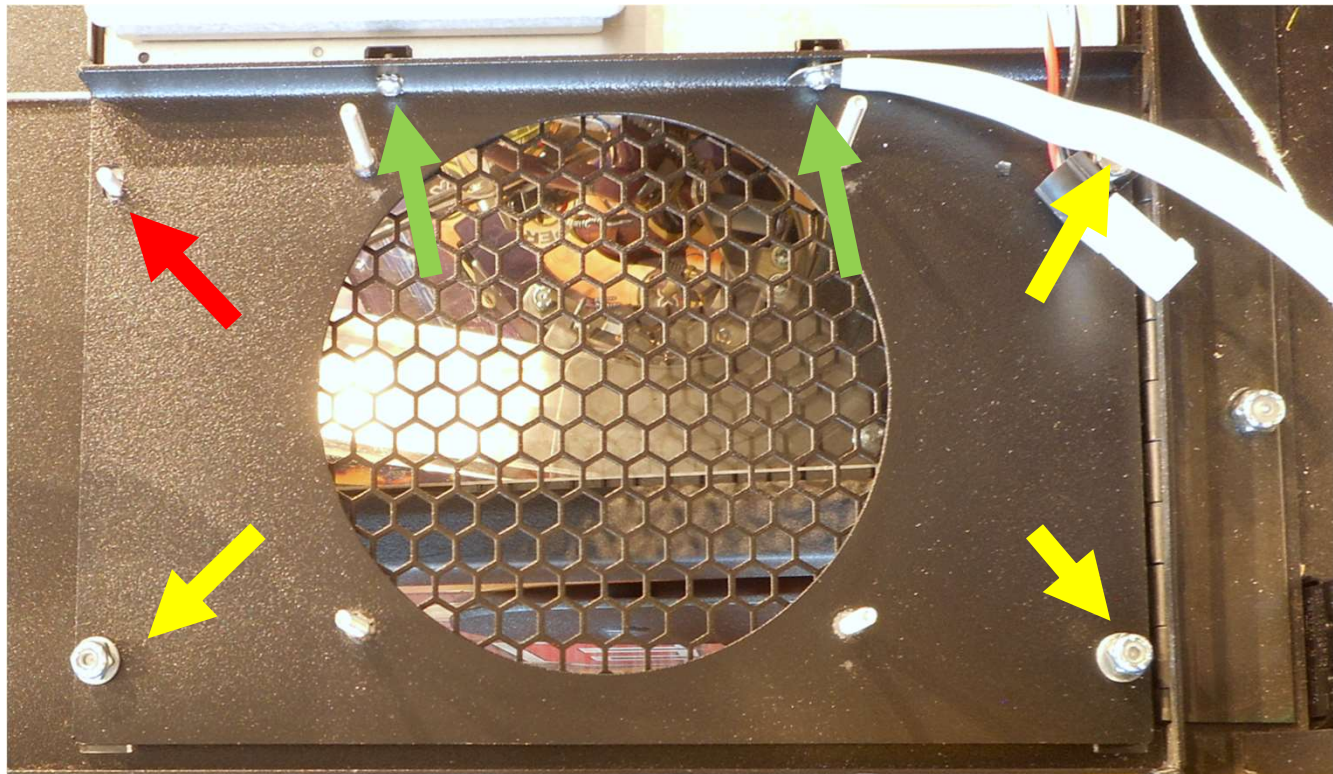
Disconnect Factory Speaker Plate - 2

- Remove the two screws that secure the speaker plate to the monitor.
- These screws will be re-used.



Install New Speaker Plate

- Install the new 5.25in speaker plate:
 - Green arrows first.
 - Yellow arrows second.
 - Red arrow last (this is the nut that holds the supporting string for the speaker panel).
- Repeat the process on the other speaker plate.



PINWOOFER

Install New Speaker Plate

- Install the new 5.25in speaker plate:
 - Green arrows first.
 - Yellow arrows second.
 - Red arrow last (this is the nut that holds the supporting string for the speaker panel).
- Repeat the process on the other speaker plate.



FINWOODSER

End of Document